

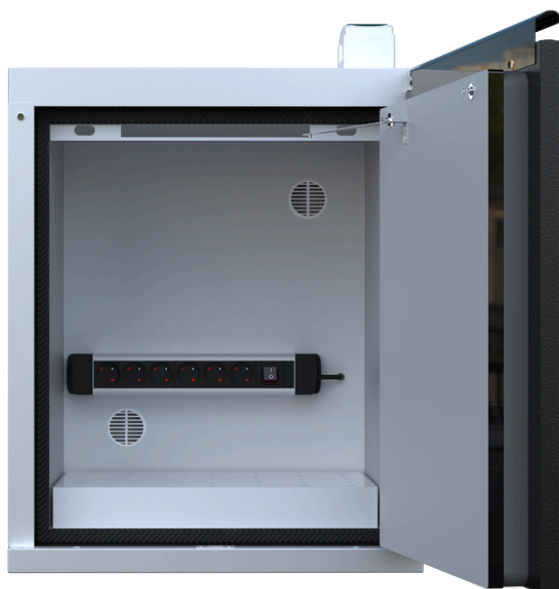
Technical Data Sheet | CH-L6PGK

LithiumVault Cabinet with Charging | 1-Door | Short

Cabinet designed for storing and charging lithium-ion batteries, certified for 90-minutes of fire protection, according to EN 14470-1 TYPE 90 standard.

Product Characteristics

| | |
|-----------------------------|--|
| External Dimensions (WxDxH) | 595 x 520 x 720mm |
| Internal Dimensions (WxDxH) | 483 x 349 x 593mm |
| Shelf Dimensions (WxDxH) | 482 x 323 x 39mm |
| Number of Shelves | 1 x gridded spill tray |
| Doors | 1 |
| Door Locks | 1 (2 x keys supplied) |
| Charging Points | 6 |
| Tare Weight | 87kg (empty cabinets, excl. accessories) |
| Standard Colour | Black door with grey frame and interior |
| Socket Options | Type E, type F, type G |
| Power Phase | Single (10A for Type G) |



Product Features

- 90-Minutes Fire Rated.
- Steel Construction.
- Anti-spark hinges.
- Ventilation.
- Self-closing door system.
- LPCB Certified to EN 12094-1 and EN 54-2 and 4 and EN 14470-1 TYPE 90.
- Charging sockets with 16A circuit breaker and illuminated on/off safety switch.
- 3G2.5mm² cable section.
- Voltage: 230V.
- Max amp: 10A for Type G.
- Max power: 2.3kW for Type G.



4 Maxwell Square
Brucefield Industry Park
Livingston
Scotland
EH54 9BL



distribution@emtez.co.uk



www.romold.co.uk



+44 (0)1506 409 973



**MADE IN
BRITAIN**