

# Technical Data

## **SPT120A** **DIRECT DRIVE PUMP UNIT** **230v - 120 LPM**

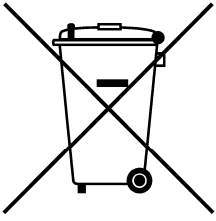


**Please read carefully before commencing installation**

Registered Office: HYTEK (GB) LIMITED, Delta House, Green Street, Elsenham, Bishop's Stortford  
CM22 6DS UK. Registered in England No. 1915382

Tel: +44 (0) 1279 815 600 email: [info@hytekgb.com](mailto:info@hytekgb.com) Web: [www.hytekgb.com](http://www.hytekgb.com)

## **ENVIRONMENTAL INFORMATION**



UK Regulation SI 2013 3113 requires that the equipment bearing this symbol on the product and/or its packaging must not be disposed of with unsorted municipal waste. The symbol indicates that this product must be disposed of separately from regular household waste streams. It is your responsibility to dispose of this and other electric and electronic equipment via designated collection facilities appointed by the government or local authorities.

## **IMPORTANT WARNING NOTES**

1. This dispenser **MUST NOT** be used to dispense petrol or other flammable liquids with a flash point below 55°C.
2. It must not be sited adjacent to a petrol dispenser or any other hazardous zone.
3. On above ground storage tanks, a spring-loaded angle check valve or pressure regulating valve must be fitted at the tank outlet to prevent loss of fuel under gravity in the event of vandalism or accidental damage.
4. Installation of this equipment and its associated tank, pipe work and fittings should only be carried out by qualified fuel installation engineers.
5. The installation must conform to all relevant electrical and local authority regulations and standards.
6. The supplied strainer or a suitable strainer/filter **MUST** be fitted to the suction line to prevent the pump unit from being damaged.

## **INSTALLATION**

1. If no wall-mounting bracket is supplied, mount on a horizontal surface using the holes provided in the pump feet or use a tank/barrel mount adaptor if provided.
2. Fit the supplied strainer to the pump inlet.
3. Connect the pipe from the tank to the suction inlet of the pump. The inlet thread is 1" BSP female. If the pump is more than 2m from the tank the pipe should be 1½ diameter reducing to the appropriate size just before the pump inlet. Seal the threads with a suitable thread-sealing compound.
4. Connect a suitable "soft wall" hose to the pump outlet. In turn, fit a suitable trigger or automatic nozzle onto the hose. Seal both with a suitable thread-sealing compound.
5. Connect the flying lead to a suitable power supply, fused at 10 amps for 230v AC and 16A for the 110v AC as follows:  
  
230v AC:   Brown – Live<sub>10</sub>  
              Blue – Neutral  
              Yellow/Green – Earth
6. To prime the pump, first ensure the pump is switched off, there is fuel in the tank, and the end of the suction hose is fully immersed. Unscrew the filter cap and pour in fuel until the pump chamber is full. Replace the filter cap and operate as per instruction for use.

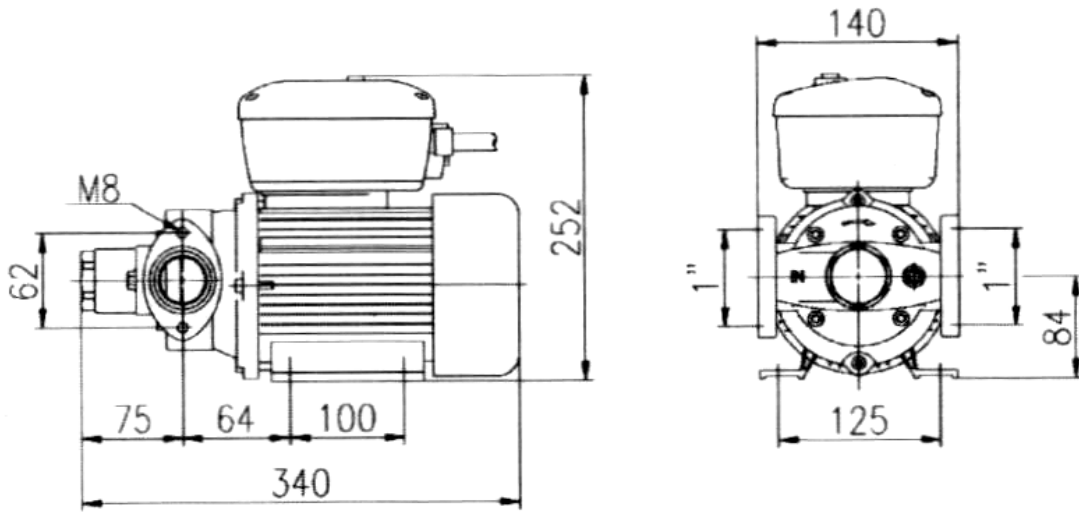
## **INSTRUCTIONS FOR USE**

1. Switch on pump.
2. Place nozzle spout in the fuel tank.
3. Squeeze nozzle trigger to dispense fuel.
4. On completion of delivery, release nozzle trigger and remove nozzle from fuel tank.

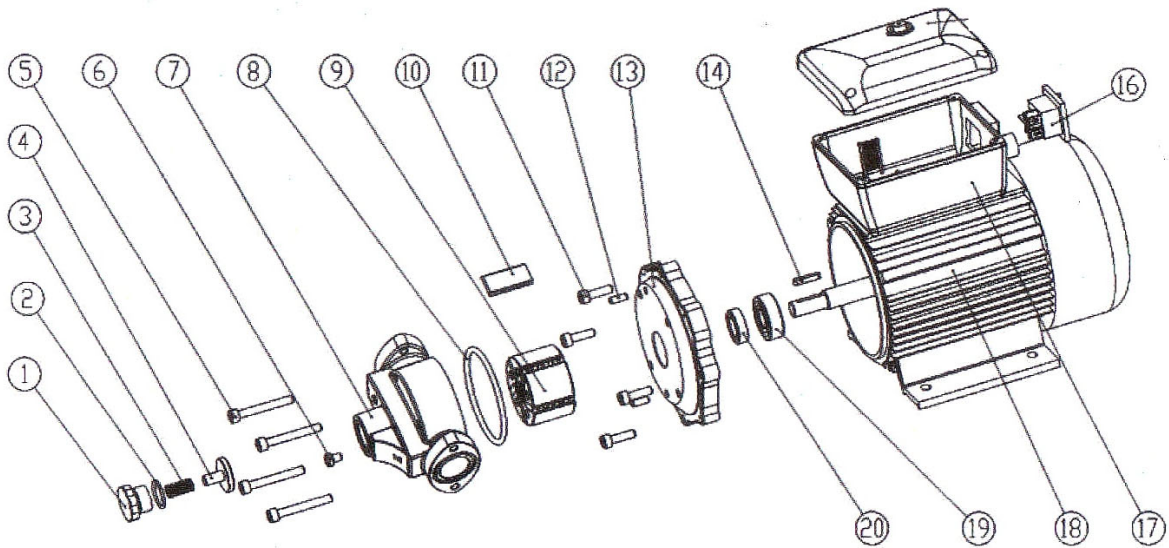
## **OPERATION WARNING - FAILURE TO OBSERVE THE WARNINGS BELOW MAY LEAD TO THE PUMP UNIT BEING DAMAGED:**

1. Please ensure that the delivery hose is stowed correctly after each use to prevent it being run over by a vehicle.
2. Do not run the pump dry.
3. Do not run the pump for prolonged periods on bypass. (Nozzle closed)  
**Maximum running time on bypass = 2 minutes.**
4. The supplied strainer or a suitable strainer/filter **MUST** be fitted to the suction line to prevent the pump unit from being damaged.

# **DIMENSIONS**



# **PARTS DIAGRAM**



# **PARTS LIST**

<b>DIAGRAM No.</b>	<b>PART NUMBER</b>	<b>DESCRIPTION</b>
9	SPT120A.1	ROTOR
10	SPT120A.2	VANE
14	SPT120A.3	SHAFT KEY
16	SPT80A.4	ON/OFF SWITCH
7	SPT120A.5	PUMP HOUSING
8	SPT120A.8	PUMP HOUSING O-RING
20	SPT120A.7	SHAFT SEAL
17	SPT120A.17	JUNCTION BOX

# **NOTES**

# **DECLARATION OF CONFORMITY**



**HYTEK**  
FUEL & LUBRICATION  
EQUIPMENT

Company Name: **Hytek (GB) Ltd**

Address: **Delta House  
Green Street  
Elsenham  
Bishops Stortford  
Hertfordshire  
CM22 6DS**

Date of Issue: **6<sup>th</sup> October 2022**

Equipment Details: **Spectra Pump Units**

Applicable Directives:  
& Standards **SI 2016 1091 Electromagnetic Compatibility  
Regulations**

**SI 2016 1101 Electrical Equipment Safety Regulations**

**SI 2008 1597 Supply of Machinery Safety Regulations**

**SI 2016 1105 Pressure Equipment Safety Regulations**

**SI 2013 3113 Waste Electrical & Electronic Equipment  
Regulations**

**SI 2012 3032 Restriction of Use of Certain Hazardous  
Substances Regulations**

Declaration Number: **UK019 Issue 8**

On behalf of the above-named company, I declare under our sole responsibility that, on the date the equipment accompanied by this declaration is placed on the market, the equipment conforms with all technical and regulatory requirements of the above listed directives.



Clive Wellings, Process Coordinator    6<sup>th</sup> October 2022, Bishops  
Stortford, Herts

THE INFORMATION CONTAINED IN THIS DOCUMENT IS PROTECTED BY COPYRIGHT © AND PROPERTY LAWS AND IS THE SOLE PROPERTY OF HYTEK (GB) LTD. ANY REPRODUCTION IN PART OR AS A WHOLE WITHOUT THE WRITTEN PERMISSION OF HYTEK (GB) LTD IS PROHIBITED.