

Technical Data

12V & 24V DIESEL TRANSFER PUMP UNIT



Applies to the following models **only**:

- 12PA.CA - 12PA.BA
- 24PA.CA - 24PA.BA
- 12PA.CASE - 12PA.BARE
- 24PA.CASE - 24PA.BARE

Please read carefully before commencing installation

Registered Office: HYTEK (GB) LIMITED, Delta House, Green Street, Elsenham, Bishop's Stortford
CM22 6DS UK. Registered in England No. 1915382
Tel: +44 (0) 1279 815 600 Fax: +44 (0) 1279 812 978 email: info@hytekgb.com
Web: www.hytekgb.com

ENVIRONMENTAL INFORMATION



UK Regulation S1 2013 3113 requires that the equipment bearing this symbol on the product and/or its packaging must not be disposed of with unsorted municipal waste. The symbol indicates that this product must be disposed of separately from regular household waste streams. It is your responsibility to dispose of this and other electric and electronic equipment via designated collection facilities appointed by the government or local authorities.

PRODUCT DESCRIPTION

This pump is designed to pump clean liquids such as diesel or gas oil in an outdoor environment using a 12 or 24 volt DC electrical supply.

SPECIFICATION

- Only suitable with diesel or biodiesel up to B30.
- Maximum flow rate: 40L/min.
- 3/4" BSPF ports.
- Direct drive vane pumping unit with bypass valve.
- Weatherproof to IP54 for outdoor use.
- 4m long battery cable & croc clips.
- Maximum run time 15 mins for 24V pumps, 30 mins for 12v pumps.

DUTY CYCLE WARNING:

THIS PUMP IS DESIGNED FOR INTERMITTENT USE. DO NOT RUN THIS PUMP CONTINUOUSLY FOR LONGER THAN 30 MINS FOR 12V PUMPS, 15 MINS FOR 24V PUMPS, AS IT MAY DAMAGE THE MOTOR AND VOID THE WARRANTY. ALLOW PUMP TO COOL FOR 15 MINS (24V) 30 MINS (12V) OR TO AMBIENT TEMP BEFORE RESUMING OPERATION.

DUTY CYCLE WILL VARY WITH LOAD AND AMBIENT TEMPERATURE.

BYPASS WARNING:

DO NOT ALLOW THIS PUMP TO RUN ON BYPASS (NOZZLE CLOSED) FOR PERIODS LONGER THAN 1 MINUTE. FAILING TO DO THIS MAY DAMAGE THE PUMP UNIT AND VOID WARRANTY.

IMPORTANT WARNING NOTES

1. This dispenser **MUST NOT** be used to dispense petrol or other flammable liquids with a flash point below 55°C.
2. It must not be sited adjacent to a petrol dispenser or any other hazardous zone.
3. A strainer/filter must be used on the pump inlet to ensure that no debris enters into the pump chamber.
4. Installation of this equipment and its associated tank, pipe work and fittings should only be carried out by qualified fuel installation engineers.
5. The installation must conform to all relevant electrical and local authority regulations and standards.
6. Do not run the pump dry.
7. Do not run the pump for longer than 1 minute on bypass. (Nozzle closed)
8. Do not use this product if it is leaking or damaged.
9. Do not run this pump for longer than the recommended duty cycle.
10. Do not run this pump if it becomes hot to the touch.
11. Do not use this pump in an enclosed environment or without adequate ventilation.

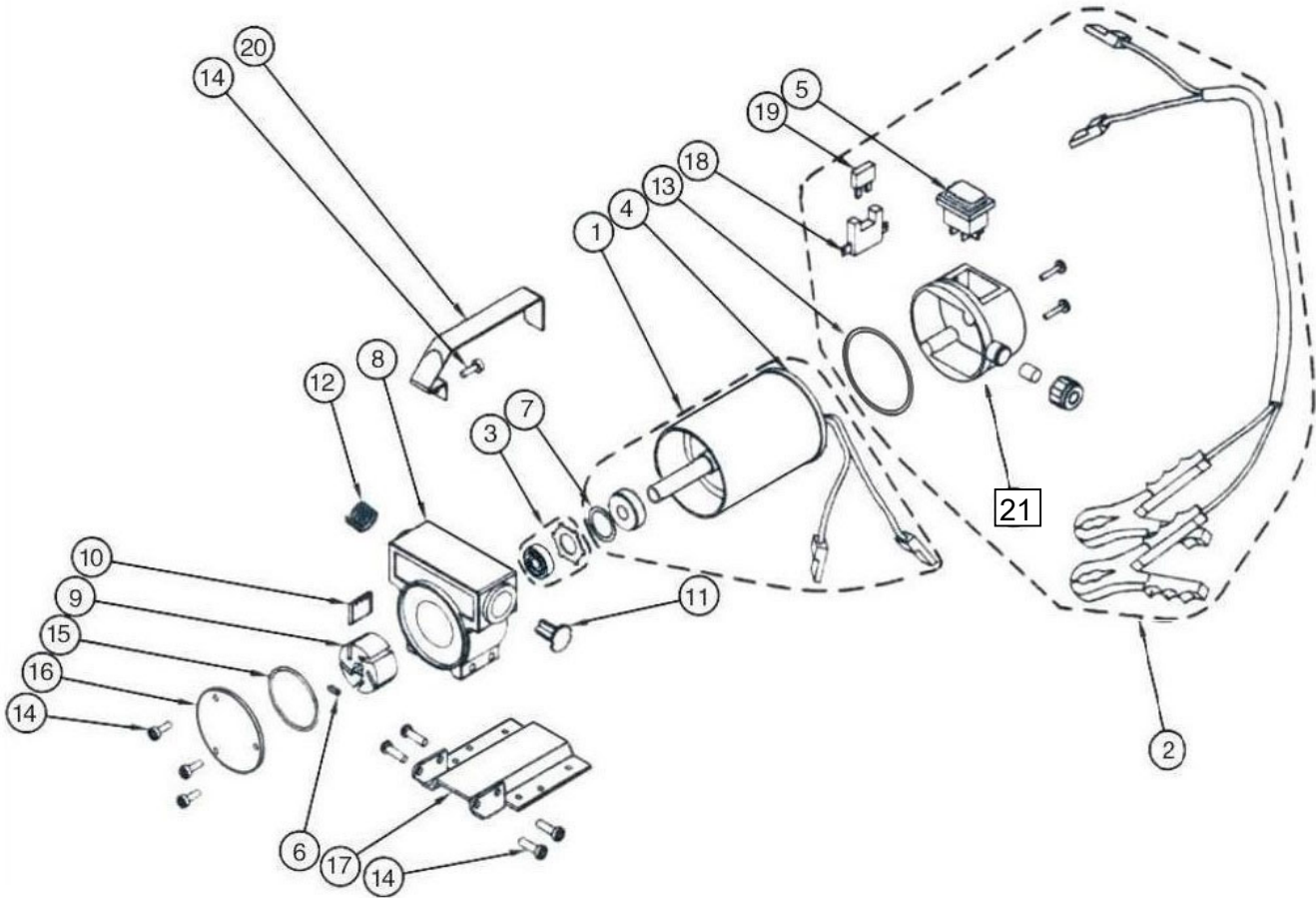
OPERATION

1. Ensure the pump is filled with fuel and fully primed.
2. Connect the pump crocodile clips to a suitable 12 or 24-volt DC power supply as follows:

Red Crocodile Clip:	Positive (+)
Black Crocodile Clip:	Negative (-)
3. Fully immerse the end of the suction hose in the fuel to be pumped and place the fuel delivery nozzle in the tank / container to be filled.
4. Switch on pump and dispense fuel.
5. Switch off pump when delivery is complete.
6. After fuelling ensure that the delivery hose is stowed correctly to prevent it being run over by a vehicle.

COMPONENTS/SPARE PARTS

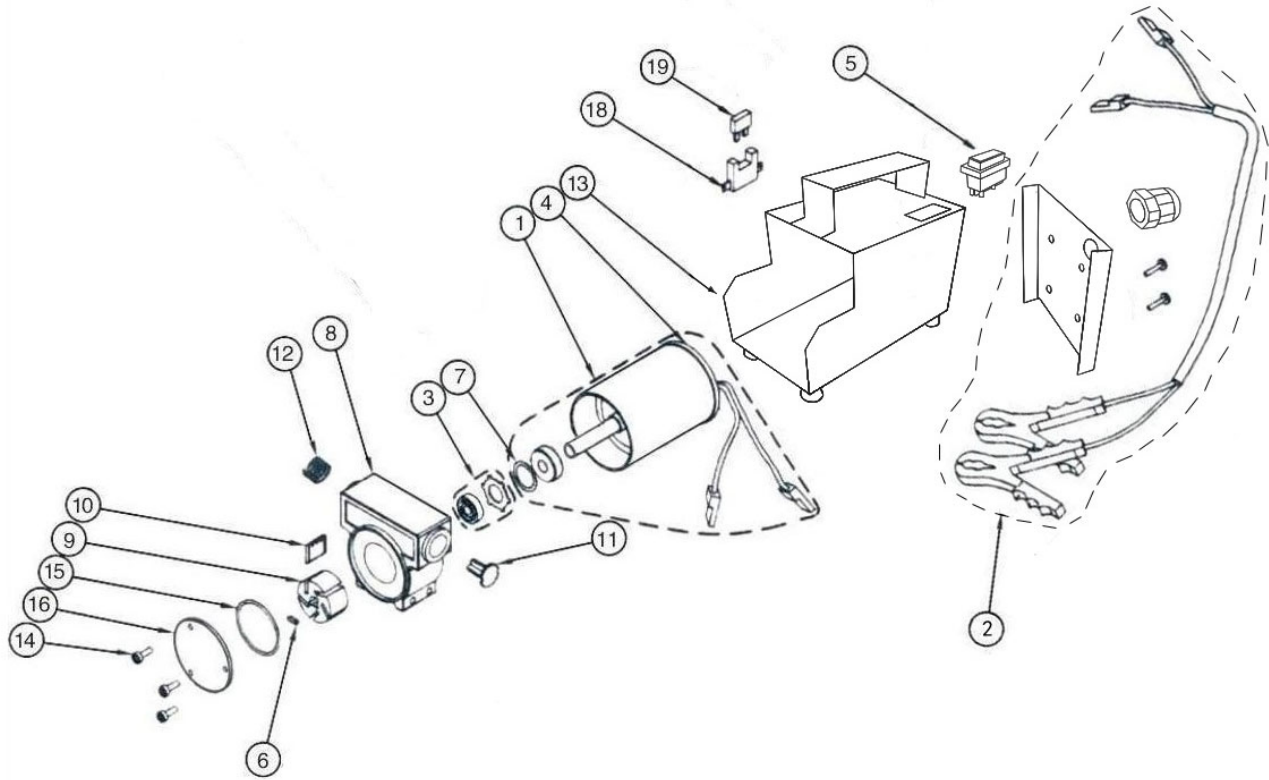
BARE PUMP – NO RED CASE (12V & 24V)



STOCK CODE	DESCRIPTION	DIAGRAM No.	QUANTITY PER PUMP
12PA.1	ROTOR	9	1
12PA.2	VANES	10	5
12PA.4	ON/OFF SWITCH	5	1
12PA.5	ROTOR PLATE	16	1
12PA.6	ROTOR PLATE O-RING	15	1
12PA.7	ROTOR KEY	6	1
12PA.9	POWER LEAD & CROC CLIPS	2	1
12PA.10	SHAFT SEAL	3	1
12PA.11	JUNCTION BOX (NO SWITCH)	21	1
12PA.FUSE	30A BLADE FUSE	19	1
12PA.CABLE	CABLE FOR EXTENDING POWER LEAD	N/A	N/A

All other parts shown available on request.

RED CASED PUMP (12V & 24V)



STOCK CODE	DESCRIPTION	DIAGRAM No.	QUANTITY PER PUMP
12PA.1	ROTOR	9	1
12PA.2	VANES	10	5
12PA.3	ON/OFF SWITCH	5	1
12PA.5	ROTOR PLATE	16	1
12PA.6	ROTOR PLATE O-RING	15	1
12PA.7	ROTOR KEY	6	1
12PA.8	RED PUMP CASING	13	1
12PA.9	POWER LEAD & CROC CLIPS	2	1
12PA.10	SHAFT SEAL	3	1
12PA.FUSE	30A BLADE FUSE	19	1
12PA.CABLE	CABLE FOR EXTENDING POWER LEAD	N/A	N/A

All other parts shown available on request.

DECLARATION OF CONFORMITY



HYTEK
FUEL & LUBRICATION
EQUIPMENT

Company Name: **Hytek (GB) Ltd**

Address: **Delta House
Green Street
Elsenham
Bishop's Stortford
Hertfordshire
CM22 6DS**

Date of Issue: **24th October 2022**

Equipment Details: **12PA and 24PA Ranges of Diesel Transfer Pumps
12 or 24 Volt DC Operated**

Applicable Directives:
& Standards

S1 2016 1091 Electromagnetic Compatibility Regulations

S1 2016 1101 Electrical Equipment Safety Regulations

S1 2008 1597 Supply of Machinery Safety Regulations

S1 2016 1105 Pressure Equipment Safety Regulations

S1 2013 3113 Waste Electrical & Electronic Equipment Regulations

**S1 2012 3032 Restriction of Use of Certain Hazardous Substances
Regulations**

RoHS test

Report number:

Issued by:

NB2010060601S2

Product Technology Service (Ningbo) Co.
6&7F, 59, Huayu Road,
Yinzhou District
Ningbo 315192
P.R. China

Declaration Number: **UK044 Issue 8**

On behalf of the above-named company, I declare under our sole responsibility that, on the date the equipment accompanied by this declaration is placed on the market, the equipment conforms with all technical and regulatory requirements of the above listed directives.



Clive Wellings, Process Co-ordinator
24th October 2022
Bishop's Stortford, Herts

THE INFORMATION CONTAINED IN THIS DOCUMENT IS PROTECTED BY COPYRIGHT © AND PROPERTY LAWS AND IS THE SOLE PROPERTY OF HYTEK (GB) LTD. ANY REPRODUCTION IN PART OR AS A WHOLE WITHOUT THE WRITTEN PERMISSION OF HYTEK (GB) LTD IS PROHIBITED.

S633/6