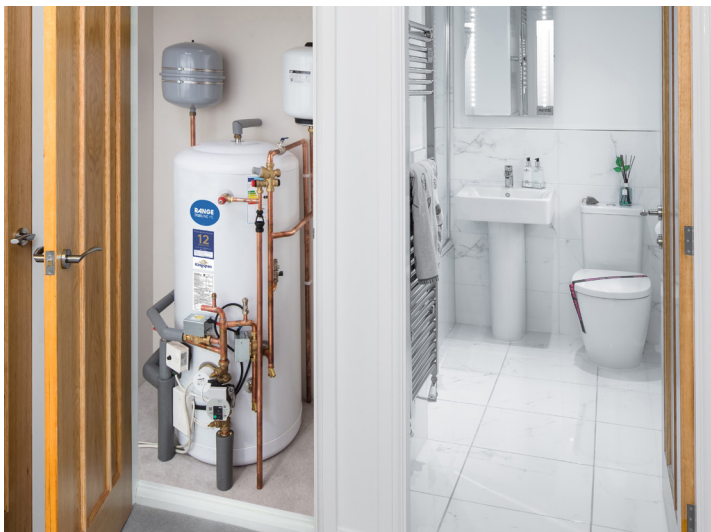


# Product Overview

## Range Tribune HE

Unvented Hot Water Cylinders with External Thermal Expansion



# Product Info

## Range Tribune HE

All cylinders supplied with:



### Key Features:

- Pre-Plumbed cylinders 2x faster to install and installation consistency from house to house
- Mains pressure hot water (regulated up to 3 bar) for powerful showers
- Good flow rates for fast filling of baths, ideal for multiple bathrooms
- Well insulated with low heat loss and low reheat times
- Oxygen purge welded Duplex stainless steel inner vessel for superior corrosion resistance
- Advanced coil-in-coil heat exchanger design for optimum heat transfer
- Guaranteed<sup>#</sup> for 25 years on Duplex inner vessel against manufacturing defects and 2 years on parts

### Direct Cylinders



### Connections

- |   |  |    |  |
|---|--|----|--|
| A | 22mm Cold feed with dip pipe to diffuser in bottom of cylinder | D1 | 22mm Boiler coil connections   |
| B | 22m Hot water outlet   | E  | Temperature & pressure relief valve*   |
| C | Immersion heater*  | F  | 22mm Secondary return (for cylinders with a capacity of 210L and above only) |
|   |  | G  | Dry stat pocket  |

**Direct cylinders come with:**  
 1x Standard immersion heater  
 1x Smart immersion heater

**Indirect cylinders come with:**  
 1x Standard immersion heater  
 (250L & 300L cylinders come with 2x standard immersion heaters)

**Solar Indirect cylinders come with:**  
 1x Standard immersion heater

Twin coil solar indirect cylinders also available with lower coil for connecting to a solar thermal system and upper indirect coil to connect to a boiler.

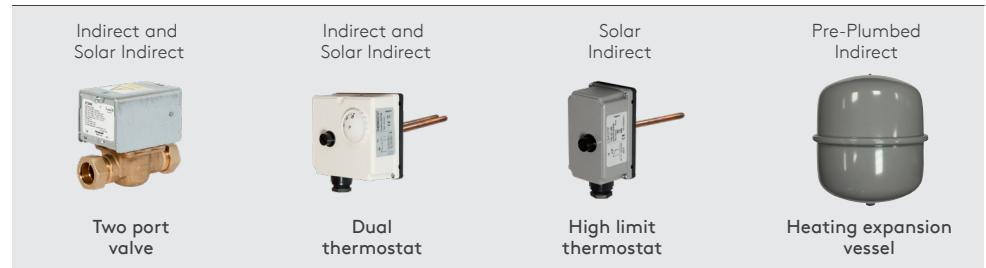


\* Factory fitted to a cylinder. All dimensions ±3mm unless stated otherwise.  
<sup>#</sup> All guarantees subject to Terms and Conditions including an annual servicing requirement.

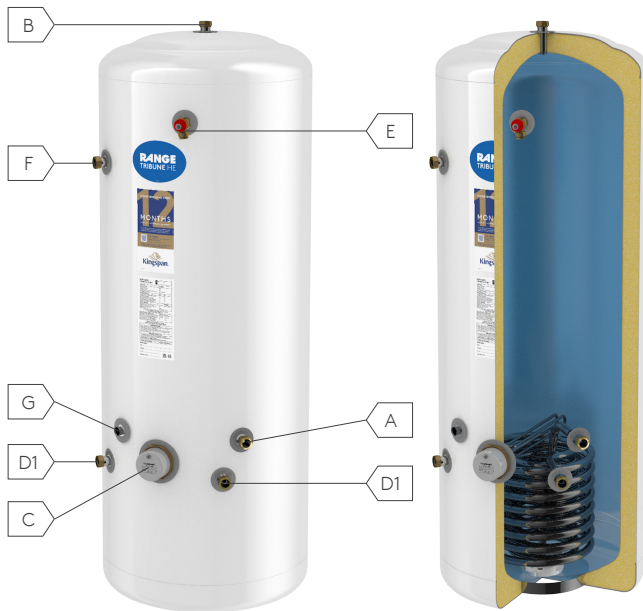
Selected models supplied with:



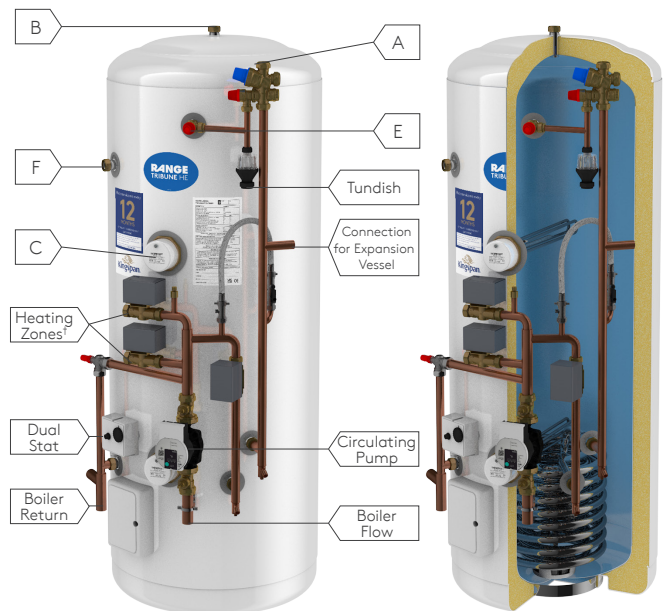
Immersion heater/heaters\*



Indirect Cylinders



Pre-Plumbed Indirect Cylinders 1 & 2 Zone



Form Factor	Nominal Capacity (Litres)	Height (mm)	Dia. (mm)	Indirect Codes	ErP (Cylinders with coil)				Standing Loss (W)	ErP (Electrically heated cylinders)					
					Solar Indirect Codes	Pre-Plumb Indirect 1 Zone Codes	Pre-Plumb Indirect 2 Zone Codes	Rating		Direct Codes	Rating	Load Profile	Noise Level (dB)	Efficiency (%)	kWh/year
Standard Vertical	120	930	550	TI120ERP	-	TI120P4ERP	TI120PT4ERP	C	54	TD120ERP	B	M	15	39.9	1222
	150	1117	550	TI150ERP	-	TI150P4ERP	TI150PT4ERP	C	59	TD150ERP	C	L	15	39.0	2628
	180	1305	550	TI180ERP	TT180ERP	TI180P4ERP	TI180PT4ERP	C	67	TD180ERP	C	L	15	41.0	2425
	210	1493	550	TI210ERP	TT210ERP	TI210P4ERP	TI210PT4ERP	C	75	TD210ERP	C	L	15	38.3	2672
	250	1744	550	TI250ERP	TT250ERP	TI250P4ERP	TI250PT4ERP	C	84	TD250ERP	C	L	15	38.4	2669
	300	2057	550	TI300ERP	TT300ERP	TI300P4ERP	TI300PT4ERP	C	93	TD300ERP	C	L	15	40.9	2504
Slimline Vertical	90	1089	475	TIS90ERP	-	-	-	C	58	TDS90ERP	B	M	15	58.9	872
	120	1276	475	TIS120ERP	-	-	-	C	56	TDS120ERP	C	L	15	39.5	2589
	150	1465	475	TIS150ERP	-	-	-	C	66	TDS150ERP	C	L	15	38.1	2689
	180	1714	475	TIS180ERP	-	-	-	C	72	TDS180ERP	C	L	15	39.2	2640
	210	2027	475	TIS210ERP	-	-	-	C	87	TDS210ERP	C	L	15	39.4	2597

Note: Do not use immersion heaters as the primary heat source on indirect or solar indirect cylinders. All dimensions ±3mm unless stated otherwise.

\*1 Zone cylinders come with 2x two port valves, one for DHW & one for space heating, 2 Zone cylinders come with 3x two port valves, one for DHW & two for space heating.

---

# Contact Details

---

## UK

**Kingspan Water & Energy Ltd.**

Tadman Street | Wakefield

West Yorkshire | WF1 5QU

T: (GB) +44 (0) 345 260 0258

T: (NI) +44 (0) 28 3836 4520

E: [hotwater@kingspan.com](mailto:hotwater@kingspan.com)

[kingspancylinders.com](http://kingspancylinders.com)

---



KingspanWaterandEnergy



@KingspanWatEner



KingspanWaterEnergy

We take every care to ensure that the information in this document is accurate at the point of publication. Dimensions may vary (within a small parameter) due to manufacturing process variations or environmental conditions. All images are for illustration purposes only and, along with dimensions, should not be taken as binding. The actual product may vary and aspects such as equipment specification/colour may differ. To ensure you are viewing the most recent and accurate product information, please visit this link: <https://www.kingspan.com/gb/en-gb/products/hot-water-cylinders> ©Kingspan and the Lion Device are Registered Trademarks of the Kingspan Group in the UK, Ireland and other countries. All rights reserved. Registered in Country No.NI017631. Registered Office: 180 Gilford Road, Portadown, Co. Armagh, BT635LF. VAT GB412 5124 03

