

HEATRAE SADIA

Supreme

Boiling water





Supreme

Instant access to boiling water can save valuable time and money – so we developed Supreme precisely with this in mind.

The Supreme is a permanently plumbed, wall-mounted electric water boiler. It comes in seven sizes to cater for a wide variety of applications. These range from the 2.5 litre Supreme 150, which is perfect for a small office or shop, all the way up to the 40 litre Supreme 560, which can provide up to 240 cups of boiling water at one time for a busy canteen, community hall or hospital.

Intelliboil™Plus is the key technological advance that sets the Supreme apart from conventional instant water boilers. It's our patented, ultra-efficient hot water management system that effectively controls the boiling cycle for improved efficiency. *Intelliboil™Plus* regularly brings the water to boil in response to usage – but if no water is drawn off for over an hour, it reduces the maximum stored water temperature from 100°C to 90°C. This saves electricity until the Supreme is used again – perhaps the next day or after a weekend – at which time the normal boiling cycle automatically resumes.

Reflecting our complete confidence in this innovative new technology, we provide every Supreme with a full two year parts and labour guarantee with on-site service support.



Supreme

Supreme is a permanently plumbed, wall-mounted electric water heater with an insulated hot water container. Water is heated by an electric heating element and the temperature is controlled within predetermined limits. As boiling water is drawn off, the unit refills with cold water. The replenishment rate allows the element to heat the incoming water as it enters the container so that it only dispenses water at the required temperature. Any steam generated during the heat up cycle is condensed and retained within the unit.

Supreme's flexibility and versatility make it at home in almost any working environment. The busier the company or organisation, the more effective Supreme is. Its simple, instant operation is ideal for a bustling office, shop, factory or hospital – indeed any location where saving time and money is important.

Supreme promotes safe practice; kettles can present safety risks in the workplace. Steam and spilt water can scald people or damage surfaces; plugs and electrical connections are not always properly maintained. Under current Health & Safety Legislation portable appliances, such as kettles, must be inspected regularly for safety. In today's busy working environment the use of unauthorised electric kettles can overload circuits and lead to the loss of important computer data.

Supreme benefit comparison			
	Supreme	Standard vending machine	Standard electric kettle
Unlimited choice of hot drinks and snacks	■		■
Immediate availability	■	■	
Low maintenance	■		■
No trailing flex and plug	■	■	
Automatic refill	■	■	
Insulated water container	■	■	
Steam-free environment	■	■	
Instant boiling water	■		
Small footprint	■		■
Ideal for teapots / flasks etc.	■		■



The easy to use lever tap on the Supreme is positioned sufficiently far from the spout to ensure steam-free handling. The spout is designed to minimise splashing when dispensing boiling water.

Supreme is offered in seven sizes ranging from the 2.5 litre Supreme 150, suitable for a small office or shop, to the 40 litre Supreme 560 SS, which is ideal for a busy canteen, community hall or hospital where up to 240 cups of boiling water are instantly available (based on 167ml cup).

Typical Supreme applications: Offices, Factories and Warehouses, School and College Staff Rooms, Hospitals and Nursing Homes, Police, Fire and Ambulance Stations, Church Halls, Clubs and Leisure Centres, Prisons and Remand Centres.



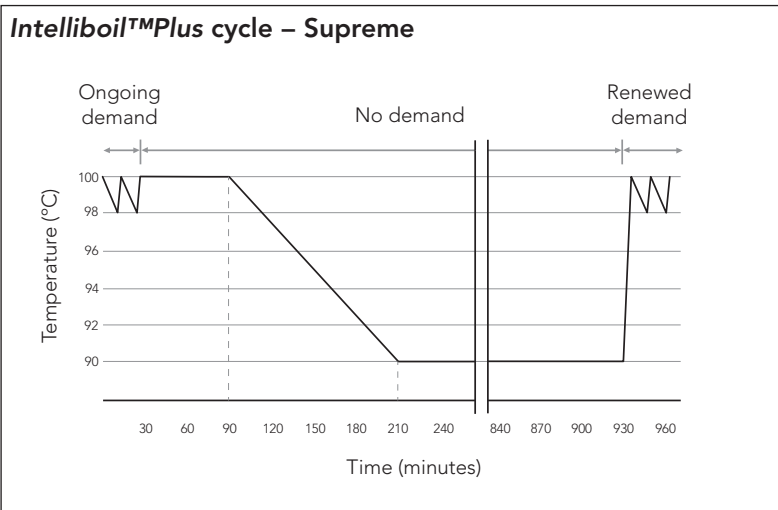
Supreme

Supreme is environmentally friendly. Steam generated during the boiling cycle collects as water droplets across the condensing chamber before dropping down into the water container for recycling. This not only conserves energy but ensures that the area around the Supreme remains totally steam-free.

IntelliBoil™Plus is a patented control system for managing the efficiency of a Supreme's boiling cycle. It regularly brings the contents of the water container to boil in response to ongoing user demand. However, when there has been no draw-off for a period of one hour, **IntelliBoil™Plus** steps back the stored water temperature. This avoids unnecessary boiling – possibly for a number of hours or even days – until there is renewed user demand. When this occurs, the boiling cycle resumes.

Research shows that many Supreme users switch their units off at weekends, and sometimes overnight, to comply with in-house procedures. When a Supreme is switched on again, the 'temperature ready' indicator confirms when the contents have reached the correct temperature.

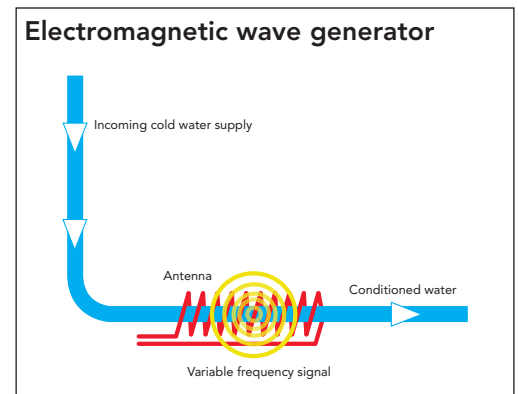
When water boils, problems caused by limescale increase. Water hardness, and the resulting scale formation from boiling, varies significantly throughout the country. In any location water quality can differ from time to time as supply sources are changed.





As the UK market leader in boiling water technology, we have developed an electromagnetic wave generator to reduce limescale formation. This integral unit produces a variable frequency signal that is transmitted into the cold water supply entering the Supreme. This treatment alters the structure of calcium carbonate ions contained in the incoming water. As a result, when boiled, they tend not to precipitate onto hot internal surfaces. Instead they remain suspended, harmlessly, in the water. This continuous process does not soften the water, is totally taint-free and has proven effective in a wide variety of water conditions.

Built to last even longer – Supreme’s water containers have been designed to withstand the rigours of boiling water. Setting a high standard in resistance to scaling and corrosion. In addition, special low watt density Superloy immersion heaters are used for longer life expectancy.



Supreme

Installing the Supreme unit is now easier than ever. Pipework is simple to connect using push-fit fittings. Electrical connections are straightforward and commissioning is now fully automatic. LEDs inform the installer when the commissioning process is complete and the unit is ready for use. A hook-on wall bracket makes mounting quick and easy.

Easy to service and descale. Supreme's integral water conditioner reduces the rate of limescale formation in even the most extreme water conditions. However, in serious cases, the eventual scale formation may still require removal. To make this task quick and easy, Supreme 150-180 SS has a detachable steam condensing chamber. Once removed this offers full access to the entire water container. Supreme 220 SS-560 SS are designed to be swung away from the wall for easy access to the element plate for scale removal.





Supreme 150 SS / 165 SS / 180 SS

Our range of boiling water products are available in an ultra modern fingerprint resistant stainless steel finish. Available in three capacities (2.5, 5 and 7.5 litre) with a full range of benefits including:

- *IntelliBoil™Plus* technology for the efficient management of the boiling cycle.
- Easy installation with auto-commissioning.
- Integral electronic water conditioner makes Supreme SS less prone to scale.
- 'Power on' indicator.
- 'Ready' indicator confirms when ready for use.
- Engineering grade thermoplastic water container.
- Detachable steam condensing chamber for easy service access.
- Modular construction ensures easy maintenance.
- Retains same footprint, service connections and wall fixings as previous models.
- Satin chrome finished heavy duty die-cast push/pull lever for controlled boiling water delivery.
- Fingerprint-resistant stainless steel outer casing.
- Up to 45 cups immediate draw-off depending on model.
- Two year on-site parts and labour guarantee.
- BEAB approved to UK Water Supply Regulations.



Supreme

Supreme 150 / 165 / 180

Supreme is available in a high quality white thermoplastic finish with a modern design and increased cups per minute. It is available in 2.5, 5 and 7.5 litre capacities. This compact and elegant model offers a full range of benefits including:

- *IntelliBoil™Plus* technology for the efficient management of the boiling cycle.
- Easy installation with auto-commissioning.
- Integral electronic water conditioner makes Supreme less prone to scale.
- 'Power on' indicator.
- 'Temperature ready' indicator confirms when ready for use.
- Engineering grade thermoplastic water container for longer life expectancy.
- Detachable steam condensing chamber for easy service access.
- Modular construction ensures easy maintenance.
- Retains same footprint, service connections and wall fixings as previous models.
- Easy to clean white high impact thermoplastic outer casing.
- Up to 45 cups immediate draw-off depending on model.
- Two year on-site parts and labour guarantee.
- BEAB approved to UK Water Supply Regulations.





Supreme 220 SS / 250 SS / 310 SS / 560 SS

A range of four instant boiling water dispensers with an ultra modern fingerprint resistant stainless steel casing and a heavy duty satin chrome die-cast tap handle. Benefits include:

- *IntelliBoil™Plus* technology for the efficient management of the boiling cycle.
- Easy installation with auto-commissioning.
- Integral electronic water conditioner makes Supreme less prone to scale.
- 'Ready' indicator confirms when ready for use.
- Supplied with one tap – up to three can be fitted for high demand applications.
- Lockable satin chrome heavy duty die-cast tap handle for security applications.
- Hinged mounting bracket for easy service access.
- 3kW element for fast recovery and extra cups per hour (6kW with 560 SS model).
- Fingerprint-resistant stainless steel outer casing.
- Up to 240 cups immediate draw-off depending on model.
- Two year on-site parts and labour guarantee.
- BEAB approved to UK Water Supply Regulations.



Accessories



Counter stand

Allows Supreme 150 / 150 SS / 165 / 165 SS / 180 / 180 SS to be installed in applications where there is insufficient wall space. Manufactured from stainless steel these stands are supplied with a removable drip tray and fixing bolts suitable for counters up to 45mm thick.

Drip tray with waste connection (95:970:123) can be ordered separately for use with the larger counter stand (95:970:133).



Programmable timer

Supreme can be programmed to be switched on and off, on a daily basis. This ensures greater economy when premises are unoccupied for extended periods. This optional accessory allows up to 42 switching operations per week and is integrated into a fused spur unit (not suitable for use with Supreme 560 SS).

Up to 42 switching operations per week.

Simple two button programming.

Self-cancelling override.

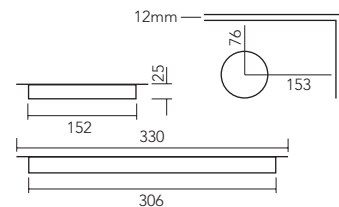
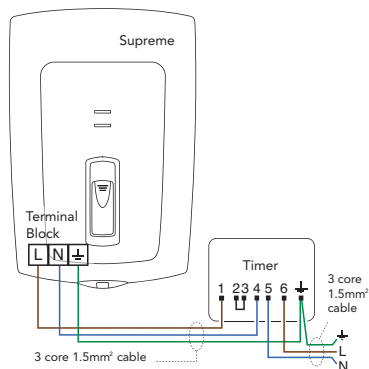
Integral double pole switch and BS 1362 fuse.

1000 hour rechargeable memory backup.

Voltage free contacts.

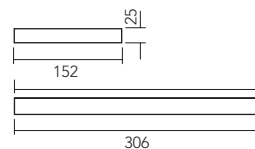
Fits onto a 25mm deep, single gang wall box.

85mm x 85mm x 38mm.



Stainless steel drip tray

This accessory completes a professional installation – designed to be inset into a work surface. Available with a 1¼" BSP waste outlet connection. Free-standing version, without waste fitting also available.





Water filter

The water filter system reduces impurities, odours and unpleasant tastes. Supplied with connecting hoses and a head for permanent installation. The head incorporates an integral shut-off valve, to facilitate quick and simple replacement of the filter cartridge, which should be replaced after one year or 11,000 litres, whichever is earliest.

Selection guide for optional accessories

Model	Additional tap	Drip tray	Counter stand	Programmable timer
Supreme 150 SS		■	■	■
Supreme 165 SS		■	■	■
Supreme 180 SS		■	■	■
Supreme 150		■	■	■
Supreme 165		■	■	■
Supreme 180		■	■	■
Supreme 220 SS	■	■		■
Supreme 250 SS	■	■		■
Supreme 310 SS	■	■		■
Supreme 560 SS	■	■		

Ordering guide

Model	Product code
Programmable timer	95:970:124
Drip tray with waste	95:970:123
Drip tray no waste	95:970:128
Counter stand 150 / 150 SS	95:970:132
Counter stand 165 / 165 SS / 180 / 180 SS	95:970:133
Additional tap for Supreme 220 SS / 250 SS / 310 SS / 560 SS	95:970:402
Water filter system	95:970:129
Replacement filter cartridge	95:970:130



Additional taps

Can be fitted to either side of the Supreme 220 SS / 250 SS / 310 SS / 560 SS units for convenience in high usage applications.

Specifications, dimensions and ordering

Specification

Capacities

Supreme 150 SS	2.5 litre.
Supreme 165 SS	5 litre.
Supreme 180 SS	7.5 litre.
Supreme 150	2.5 litre.
Supreme 165	5 litre.
Supreme 180	7.5 litre.

Rating

Supreme 150 SS / 165 SS / 180 SS
2.5kW @ 240V. (2.3kW @ 230V) to recover 135 cups* per hour.

Supreme 150 / 165 / 180
2.5kW @ 240V. (2.3kW @ 230V) to recover 135 cups* per hour.

Outer casing

Supreme 150 SS / 165 SS / 180 SS – Fingerprint-resistant stainless steel with grey ABS mouldings.

Supreme 150 / 165 / 180 – White high impact thermoplastic.

Thermal insulation

CFC/HCFC free (ODP zero) pre-moulded polystyrene and thermoplastic blend.

Water container

Moulded Polyphenylene Sulphide. Removable steam condensation chamber for maintenance access.

Heat unit

Low watt density Superloy element for long life.

Thermostat

Electronic to control water temperature up to boiling point. Electromagnetic wave generator to reduce limescale formation.

IPX rating

IPX 2 rated

Safety features

Supreme 150 SS / 165 SS / 180 SS – All models are low pressure vented. Dry start protection by self-resetting bi-metal thermal cut-out. Boil-dry protection by manually-resettable disc-type bi-metal cut-out.

Supreme 150 / 165 / 180 – All models are low pressure vented. Dry start protection by self-resetting bi-metal thermal cut-out. Boil-dry protection by manually-resettable bi-metal cut-out.

Approvals

BEAB approved to UK Water Supply Regulations. CE marked. Manufactured in the UK in a BS EN ISO 9001:2008, ISO 14001:2004 and BS OHSAS 18001:2007 registered factory.

Installation

Fixing

Supreme units have a fixing template and hook-on brackets for wall-mounting, ideally over a draining board or drip tray. Clearance should be allowed all around the unit for maintenance (refer to instructions).

Retrofit

Supreme retains the same footprint, service connections and wall fixings as previous Supreme models.

Plumbing

Cold water feed should be taken directly from the mains – min pressure 0.5 bar (7psi) max pressure 10 bar (145psi). Bottom or rear entry is possible using 15mm push-fit connections.

Electrical

Supreme 150 SS / 165 SS / 180 SS – Supply (bottom or rear entry) 2.5kW units can be taken from a suitable ring final circuit via a fused spur but must be via a double-pole linked isolating switch with a minimum break capacity of 13A.

All electrical work must comply with the latest IEE wiring regulations.

Supreme 150 / 165 / 180 – Supply (bottom or rear entry) can be taken from a suitable ring final circuit via a fused spur but must be via a double-pole linked isolating switch with a minimum break capacity of 10.5A. All electrical work must comply with the latest IEE wiring regulations.

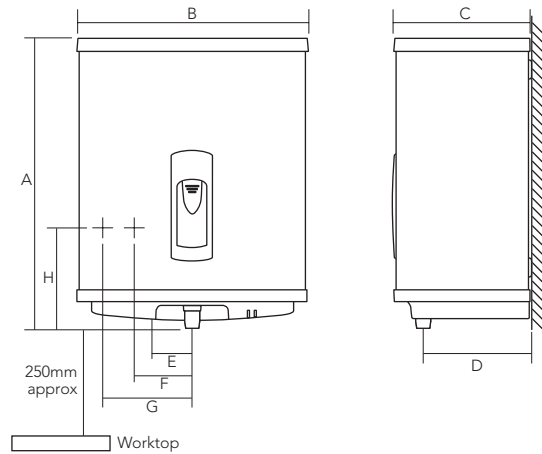
Guarantee

See opposite.

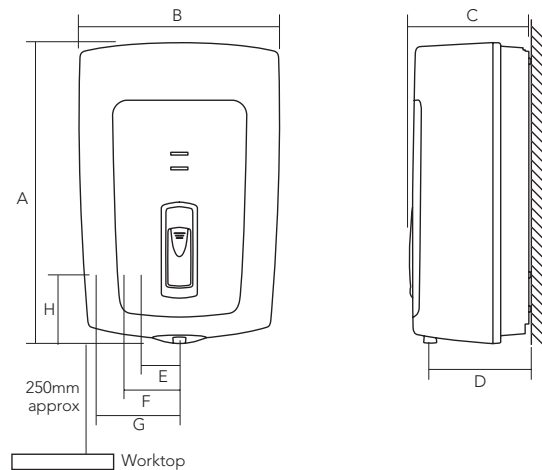
* based on 167ml cup.

Dimensions

Supreme 150 SS / 165 SS / 180 SS



Supreme 150 / 165 / 180



Model	A	B	C	D	E	F	G	H	Weight	
									empty	full
(mm)	(mm)	(mm)	(mm)	(mm)	Cable (mm)	Inlet (mm)	Vent (mm)	(mm)	(kg)	(kg)
150 SS	423	337	203	160	46	85	115	128	6.4	12
165 SS	501	337	203	160	69	103	133	124	7.3	16
180 SS	506	337	262	220	69	103	133	124	8.3	21
150	445	290	190	152	46	85	115	101	5.6	8.4
165	510	335	200	163	69	103	133	101	6.9	11.8
180	510	335	262	225	69	103	133	101	7.9	15.4

Capacities

Model	Cups (167ml)		Mugs (250ml)		Volume (litres) at one time
	per hr	at one time	per hr	at one time	
150 SS	150	15	100	10	2.5
165 SS	165	30	110	20	5
180 SS	180	45	120	30	7.5
150	150	15	100	10	2.5
165	165	30	110	20	5
180	180	45	120	30	7.5

Specification

Capacities

Supreme 220 SS	10 litre.
Supreme 250 SS	15 litre.
Supreme 310 SS	25 litre.
Supreme 560 SS	40 litre.

Rating

Supreme 220 SS, 250 SS and 310 SS
3kW @ 240V. (2.8kW @ 230V) to recover 160 cups* per hour.

Supreme 560 SS
6kW @ 240V. (5.5kW @ 230V) to recover 320 cups* per hour.

Outer casing

Fingerprint resistant stainless steel with grey ABS mouldings.

Thermal insulation

CFC/HCFC free (ODP zero) flame-retardant expanded polyurethane.

Water container

Tin-plated copper, hinged access to element plate.

Heat unit

Low watt density Superloy element(s) for long life.

Thermostat

Electronic to control water temperature up to boiling point.

IPX rating

IPX 2 rated

Safety features

All models are low pressure vented. Dry start protection by self-resetting bi-metal thermal cut-out. Boil-dry protection by manually-resettable disc-type bi-metal cut-out.

Approvals

BEAB approved to UK Water Supply Regulations. CE marked.
Manufactured in the UK in a BS EN ISO 9001:2008, ISO 14001:2004 and BS OHSAS 18001:2007 registered factory.

Installation

Fixing

Supreme units have a fixing template and hook-on brackets for wall-mounting, ideally over a draining board or drip tray. Clearance should be allowed above and below the unit for maintenance and either side if additional taps are to be fitted (refer to instructions). Hinged mounting bracket allows unit to swing forward for ease of service access.

Plumbing

Cold water feed should be taken directly from the mains – min pressure 0.5 bar (7psi) max pressure 10 bar (145psi).

Bottom or rear entry is possible using 15mm push-fit connections.

Electrical

Supply (bottom or rear entry). 3kW units can be taken from a suitable ring final circuit via a fused spur but must be via a double-pole linked isolating switch with a minimum break capacity of 13A. 6kW units must be provided with their own dedicated supply.

All electrical work must comply with the latest IEE wiring regulations.

Guarantee

Each Supreme model (and accessories – except filter cartridge) is covered by a two year parts and labour guarantee with on-site service from date of purchase provided that:

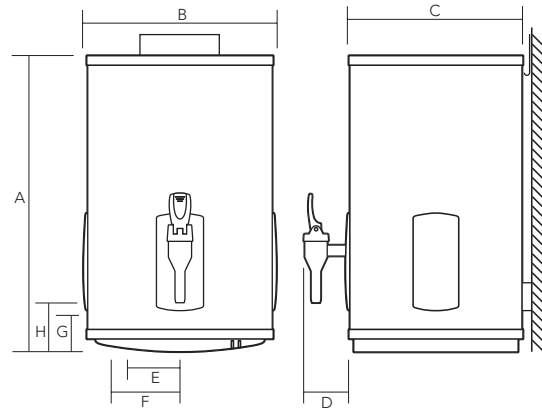
- It has been correctly installed as per the instructions contained in the instruction manual and all relevant Codes of Practice and Regulations in force at the time of installation.
- It has not been modified in any way, other than by Heatrae Sadia Heating or heateam.
- It has been installed in the UK.
- The damage is not due to scaling or frost.
- It has only been used for the storage of wholesome water.
- It has not been tampered with or been subjected to misuse or neglect.
- Within 60 days of installation the user completes and returns the certificate supplied along with the proof of purchase to register the product.

Evidence of purchase and date of supply must be submitted. Supreme is not guaranteed against damage due to scaling or frost. This guarantee does not affect your statutory rights.

* based on 167ml cup.

Dimensions

Supreme 220 SS / 250 SS / 310 SS / 560 SS



Model	A	B	C	D	E	F	G	H	Weight	
(mm)	(mm)	(mm)	(mm)	(mm)	Cable (mm)	(mm)	(mm)	(mm)	empty (kg)	full (kg)
220 SS	585	372	366	90	104	136	62	98	21	36
250 SS	655	372	366	90	104	136	62	98	22	42
310 SS	795	372	366	90	104	136	62	98	26	55
560 SS	1000	372	366	90	104	136	62	98	31	75

Capacities

Model	Cups (167ml)		Mugs (250ml)		Volume (litres) at one time
	per hr	at one time	per hr	at one time	
220 SS	220	60	145	40	10
250 SS	250	90	165	60	15
310 SS	310	150	205	100	25
560 SS	560	240	370	160	40

Ordering guide

Model	Rating @ 240V (kW)	Capacity litres	Product code
Supreme 150 SS	2.5	2.5	95:200:240
Supreme 165 SS	2.5	5	95:200:241
Supreme 180 SS	2.5	7.5	95:200:242
Supreme 150	2.5	2.5	95:200:252
Supreme 165	2.5	5	95:200:253
Supreme 180	2.5	7.5	95:200:254
Supreme 220 SS	3.0	10	95:200:243
Supreme 250 SS	3.0	15	95:200:244
Supreme 310 SS	3.0	25	95:200:245
Supreme 560 SS	6.0	40	95:200:246



Contact

Specification Advice Hotline

T: 01603 420220 F: 01603 420229

E: specifier@heatraesadia.com

Web www.heatraesadia.com

After Sales Service

T: 0844 871 1535 F: 0844 871 1528

E: heatraesadiaservice@heateam.co.uk

Web www.heateam.co.uk

heateam

heateam is Heatrae Sadia's very own service division. With us on your side, you can be sure that your customers are in the very best hands. Totally committed to quality and safety, heateam is open 7 days a week, for 363 days a year, and offers:

- **Dedicated Trade Advice Line** – our helpful and qualified specialists are always on hand to help you with even the most complex technical query.
- **Installer Priority Call-Outs** – our 280 strong team of specifically trained expert heating engineers covers the UK, no one is better qualified to look after Heatrae Sadia's products for the duration of the guarantee.
- **Fully Stocked Vans** – a nationwide fleet of vans, fully stocked with spare parts – meaning we can repair our appliances on the first visit in 95% of call-outs.
- **Exclusive Service Plans** – heateam also offer Heatrae Sadia's customers a range of exclusive annual service plans.

Opening Times: Monday-Friday 8am-6pm, weekends and Bank Holidays* 8.30am-2pm.

*excluding Christmas Day and New Year's Day.

Simply call **0844 8711535** or visit our website at www.heateam.co.uk



Heatrae Sadia Heating Hurricane Way Norwich Norfolk NR6 6EA

Heatrae Sadia Heating may introduce modifications to their products from time to time. Consequently, the details given in this brochure are subject to alteration without notice.

95 900 851 Issue 10 © Heatrae Sadia Heating 2012

PART OF BDR THERMEA

Brochures for all of our products are available free of charge. Please call our literature hotline on 01603 420127.

MEGAFLO

Megaflo eco cylinder range
Megaflo Commercial cylinder range

DOMESTIC HEATING AND HOT WATER

Aerheat
Amptec
Electric Solar
Electromax
Electromax Solar
Immersion Heaters
Megalife HE
Megalife Solar
Multipoint Instantaneous

COMMERCIAL HOT WATER

B3M / C3M
Express
FBM
Handy
Handy Dri / Hair Drier
Hotflo
Multipoint
Multipoint SS
Streamline
UTC 99

DRINKING WATER

Aquatap
SuperChill
Supreme
Supreme Counter Top