

OIL UP FEEDER 88



OUF 88 – TECHNICAL SPECIFICATIONS

PUMP TYPE	Suction Solenoid Pump
LIFTING HEIGHT (MAX.)	8 m vertical (8 mm I.D. tube)
MÁX. HORIZONTAL DISTANCE	100 m horizontal (8 mm I.D.. tube)
OUTLET FLOW RATING (8 mm I.D. tube)	8 L/hr at: 8 m vertical & 25 m horizontal 15 l/hr at: 5 m vertical & 25 m horizontal
INLET CONNECTION	3/8 " F BSP
OUTLET CONNECTION	3/8 " F BSP
OVERFLOW OUTLET CONNECTION	½ " F BSP
POWER SUPPLY	AC 230V, 50Hz
POWER CONSUMPTION	20 W
RESERVOIR TOTAL CAPACITY	3,5 Litre.
DIMENSIONS	Width: (240 mm) Depth: (125 mm) Height: (300 mm)
WEIGHT	3 kg
FUEL TYPE	Kerosene & Diesel Oil

OUF 88 INSTALLATION

1/ Connect the suction line from the main tank to the 'inlet' and the supply pipe ('gravity fed') to the appliance to the outlet. Connect up the overflow facility if required.

2/ Connect the OUF 88 to the mains supply either through a plug (not included) or fused electric spur (see attached wiring diagram).
The mains supply cable has to pass through the drill to the back part of the mounting plate
Once powered up the low level led light will come on.

3/ To start the OUF automatic operation, press the start button, which will start the pump, filling the OUF 88 reservoir, until the Low Level lamp turns off. (The pump may be noisy initially until the fuel starts coming through to the pump.) Once pressed, you can release the start button, because the OUF works in automatic mode.

4/ Once the oil has filled the OUF 88 reservoir to the programmed maximum level (80% approx), the working level switch will stop the pump.

5/ The OUF is now ready for use and the appliance(s) can be used. The OUF 88 will manage the fuel supply automatically.

If the oil does not come up to the OUF 88:

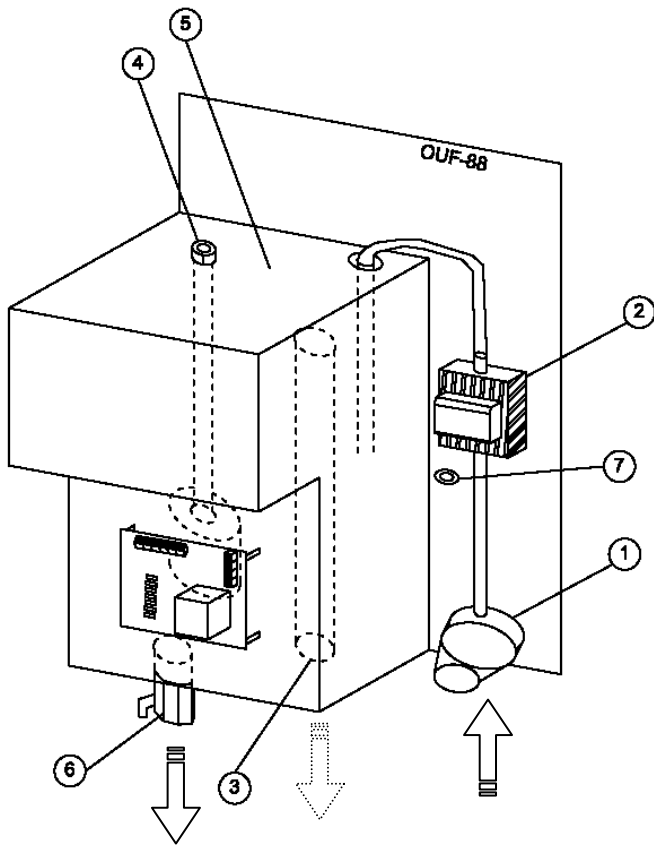
- Check suction pipe for blockage and/or vacuum tightness.
- Is your vertical lift height lower than 8 mt?
- Check if the filter is clogged/dirty

If the problem still persists:

- Check pump suction power (with a vacuum gauge or by placing your finger at the filter inlet and pressing the start button to see if you can feel suction.
- Check power supply voltage
- Prime the suction line at the OUF 88. Then switch on the pump to pull this oil through and the oil from the tank.

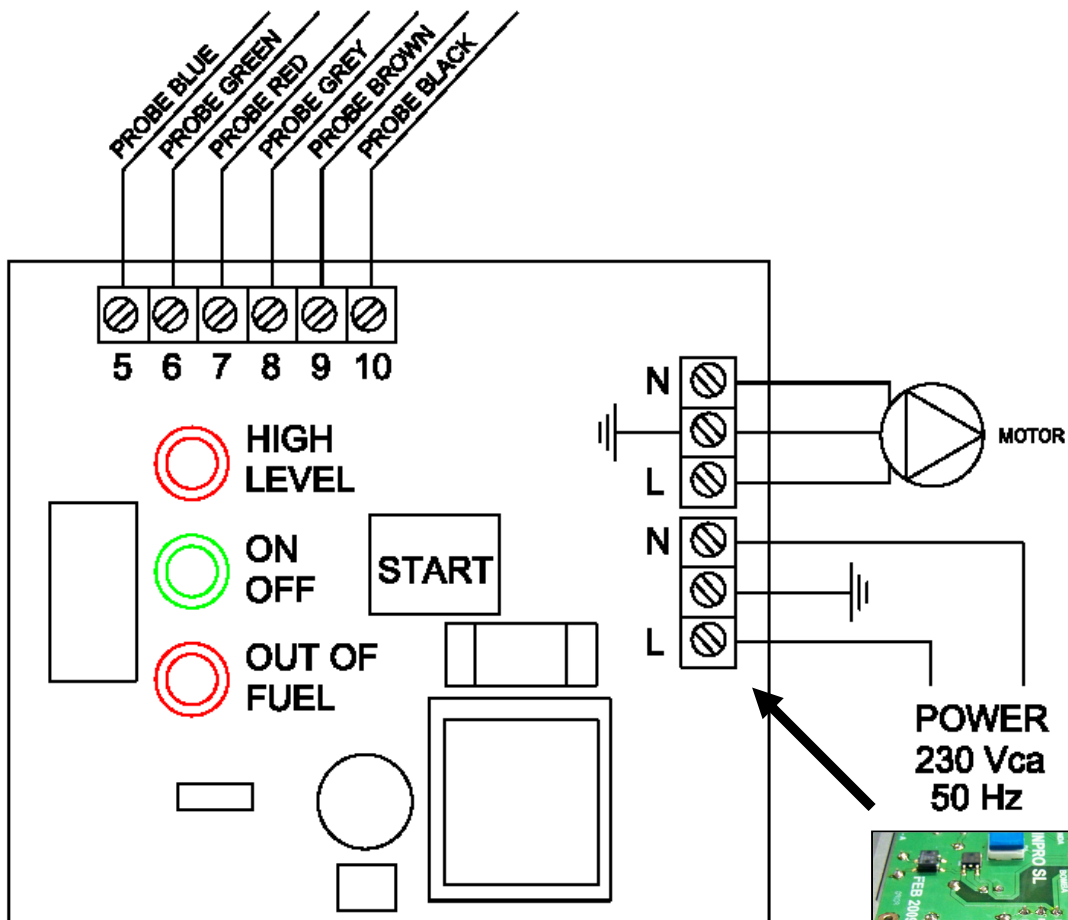
Maintenance:

- Clean regularly the filter bowl and strainer.



- 1.- FILTER 3/8" BSP / INLET CONNECTION
- 2.- PUMP
- 3.- OVERFLOW 1/2" BSP CONNECTION
- 4.- FLOAT SWITCH
- 5.- OIL RESERVOIR (3 lts)
- 6.- OUTLET CONNECTION TO APPLIANCE 3/8" BSP
- 7.- POWER SUPPLY DRILL

WIRING DIAGRAM OUF-88



△ **Warning:** Use the cable drill to pass the mains supply cable to the back from mounting plate.

