

## Ultrasteel



Mains pressure hot water (regulated up to 3 bar) for powerful showers.

Good flow rates for fast filling of baths, ideal for multiple bathrooms.

Very well insulated – economical to run with low heat loss.

Low reheat times for fast availability of hot water.

Duplex stainless steel basic vessel with superior corrosion resistance & aesthetically pleasing outer case.

Available in a wide range of capacities and model types including slimline, horizontal and solar options.

External expansion vessel



### Kingspan Environmental Ltd.

#### Wakefield Office:

Tadman Street, Wakefield,  
West Yorkshire, WF1 5QU

#### GB Sales Office:

T. 0345 260 0258  
E. cylinder.sales@kingspan.com

#### NI Sales Office:

T. 028 3836 4520  
E. cylinder.sales@kingspan.com

#### Technical Support:

T. 0345 260 0007  
E. cylinder.tech-support@kingspan.com

#### Customer Services:

T. 0345 260 7260  
E. customercare@kingspan.com

 KingspanHWSystems

 TheKingspanEnv

 @kingspanenviro

We take every care and precaution to ensure that information in this document is accurate at the point of publishing but with continuous product development the details given in this document are subject to alteration without notice.

REF: Kingspan Albion - Ultrasteel DL - English - Issue 1 - Feb 2018

## Kingspan Albion Ultrasteel Cylinders Quick Guide



Guaranteed for

# 25-Year

2-Years on parts, See installation instructions for full guarantee T&C's



kingspan.com





For over 60 years, Kingspan Albion has been designing and manufacturing products that store and deliver consistently reliable hot water throughout people's homes.

Our unvented hot water cylinders remain popular with installers and home owners, as we have continued to meet their evolving demand whilst sticking to three core principals of:

## Quality

We use high-grade duplex stainless steel to ensure Ultrasteel cylinders are resistant to corrosion. That means we can back every cylinder with a 25-year guarantee, with a 2-year guarantee on parts supplied.

## Functionality

Kingspan Albion cylinders are known for their high build quality, fast flow rates and energy-efficient insulation. The sleek looks of the Ultrasteel make them winners for both practicality and style.

## Reliability

Every Kingspan Albion Ultrasteel Plus and Ultrasteel cylinder is individually pressure-tested up to 15 bar ensuring it's mechanically strong and watertight.

## Direct

Ultrasteel Direct cylinders heat quickly through the 3kW electric smart immersion heater. They feature a back-up immersion heater, which can also act as a boost.

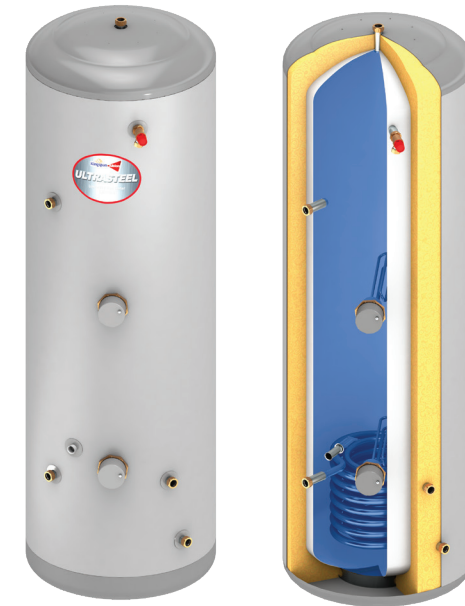


Code	Cap. (L)	Height (mm)	Dia. (mm)	ErP Rating	Load Profile	AEC kWh/Year	Efficiency (%)	dB
AUD120ERP	120	933	550	B	M	1222	34.9	15
AUD150ERP	150	1120	550	C	L	2628	39.0	15
AUD180ERP	180	1308	550	C	L	2689	41.0	15
AUD210ERP	210	1496	550	C	L	2672	38.3	15
AUD250ERP	250	1746	550	C	L	2669	38.4	15
AUD300ERP	300	2055	550					

## Indirect

Ultrasteel Indirect cylinders heat up rapidly through the coil-in-coil heat exchanger and are compatible with gas or oil boiler.

They feature a back-up immersion heater, which can also act as a boost or secondary heat source.



Code	Cap. (L)	Height (mm)	Dia. (mm)	ErP Rating	Standing Loss (W)
AUI120ERP	120	933	550	B	50
AUI150ERP	150	1120	550	C	68
AUI180ERP	180	1308	550	C	69
AUI210ERP	210	1496	550	C	73
AUI250ERP	250	1746	550	C	91
AUI300ERP	300	2055	550	C	87