

Technical Data

RETRACTABLE HOSE REEL



Applies to the following models **only**:

- HRO15.12C - HRO15.12F - HROAW15.10C - HROG15.6C

Please read carefully before commencing installation

Registered Office: HYTEK (GB) LIMITED, Delta House, Green Street, Elsenham, Bishop's Stortford
CM22 6DS UK. Registered in England No. 1915382

Tel: +44 (0) 1279 815 600 Fax: +44 (0) 1279 812 978 email: info@hytekgb.com

Web: www.hytekgb.com

IMPORTANT WARNING NOTES

Read carefully and understand all instructions before operating. Failure to follow the safety rules and other basic safety precautions may result in serious personal injury. Keep these instructions in a safe place and on hand so that they can be read when required.

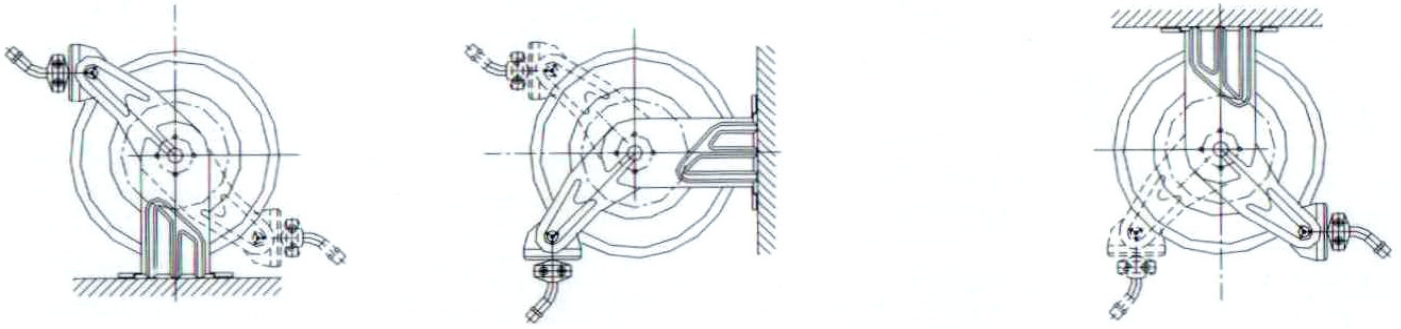
SAFETY PRECAUTIONS

1. Read and understand all instructions.
2. The warnings, cautions, and instructions discussed in this instruction manual cannot cover all possible conditions or situations that could occur whilst operating this hose reel. It must be understood that common sense and caution need to be applied by the operator.
3. Use suitable personal protective equipment when assembling, operating or maintaining this hose reel.
4. Ensure that the reel is properly installed before connecting inlet or outlet hoses.
5. Bleed fluid or gas pressure from the system before servicing the reel.
6. Before connecting the reel to the supply ensure that the pressure does not exceed the maximum working pressure rating of the reel.
7. If a leak occurs or if the reel ceases to unwind or rewind remove system pressure immediately.

PRODUCT DESCRIPTION

Heavy-duty steel constructed hose reel supplied with hose. Designed for delivering oil, water or grease (model dependent). The reel can be wall, ceiling, bench or floor mounted.

INSTALLATION INSTRUCTIONS



HOSE REEL INSTALLATION

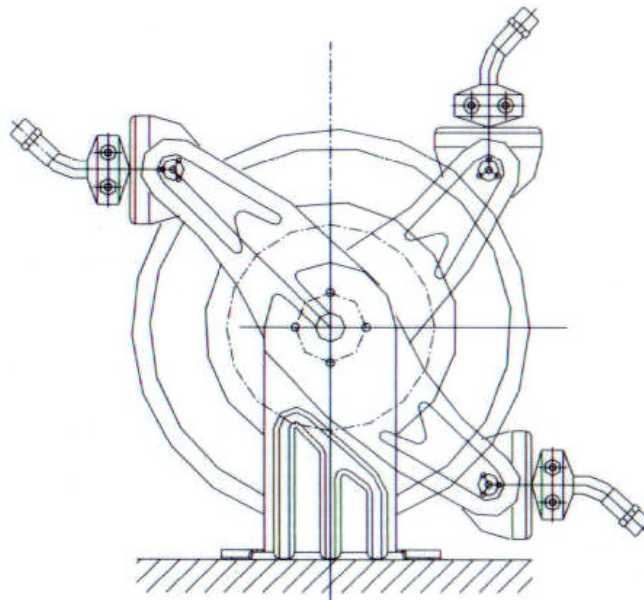
1. Prior to mounting the reel, ensure that the supply pressure does not exceed the maximum working pressure of the hose reel.
2. The reel can be mounted using the fitted mounting bracket by positioning the reel on the floor, wall or ceiling and securing into place.
3. Depending on where the reel is placed, it may be necessary to adjust the hose bumper and reposition the guide arm to use the hose properly.

HOSE BUMPER ADJUSTMENT

1. Pull out the hose until the latch pawl is engaged.
2. The hose bumper may be adjusted by loosening the slotted screws.
3. Slide the bumper to the desired position and tighten the screws.
4. Pull the hose to disengage the latch pawl.

GUIDE ARM ADJUSTMENT

1. Pull out the hose until the latch pawl is engaged.
2. Remove the hose bumper.
3. Disengage the latch pawl whilst maintaining a firm hold on the reel.
4. Turn the reel hand over hand approximately two or three revolutions until the spring tension is removed.
5. Remove the nuts and washers holding on the guide arm.
6. Move the guide arm to the desired position and replace and tighten the nuts and washers, see diagram below for guide arm locations.
7. Re-tension the reels drive spring by turning the spool hand over hand for two or three revolutions and engage the latch pawl.
8. Pull the hose through the guide arm and replace the hose bumper.



OPERATING INSTRUCTIONS

1. Slowly pull the hose from the reel. A clicking noise will be heard for every revolution of the reel.
2. To latch the reel, pull the hose to the desired length and then allow it to retract slightly until you hear a second or third click. The hose is now latched.
3. To unlatch, slowly pull out the hose from the reel until the clicking stops and then slowly let the cable retract until the hose bumper rests against the reel guide.

MAINTENANCE

- **WARNING – DISMANTLING OF THE UNIT BY UNSKILLED PERSONNEL COULD PROVE HAZARDOUS AS THIS UNIT CONTAINS PRELOADED SPRINGS.**
- To adjust the tension of the reel you will need to add or remove wraps of hose from the reel one wrap at a time until the desired tension is achieved. Add wraps to increase tension, remove wraps to decrease tension.
WARNING - ALWAYS ENSURE THAT THE REEL IS CORRECTLY SECURED AND LATCHED WHILST UNDERTAKING THIS PROCEDURE TO PREVENT INJURY.
- Clean the reel using warm soapy water. Do not clean using solvents that may damage the reel casing or hose.

REPLACING THE HOSE

REMOVING THE HOSE

1. Pull out the hose leaving 2 or 3 feet on the reel.
2. Engage the latch pawl.
3. Unthread the hose at the connection of the swivel tube and remove the hose.

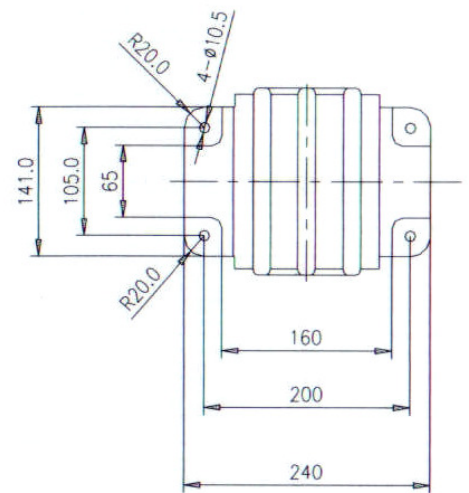
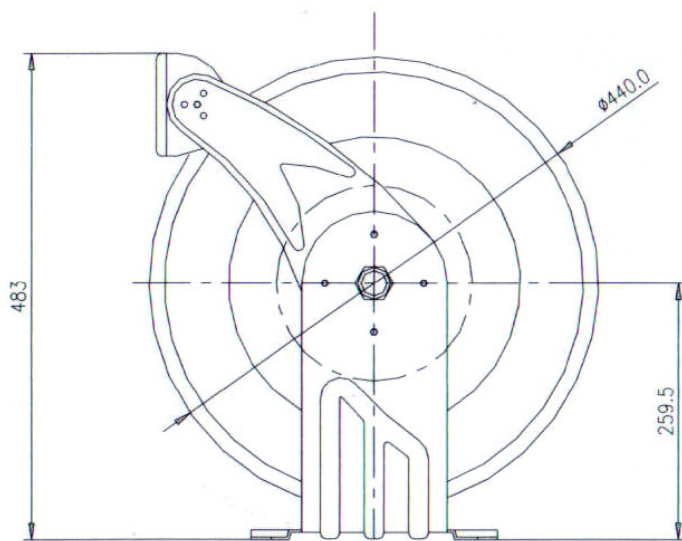
REFITTING THE HOSE

1. With the latch pawl still engaged, route the hose through the guide arm rollers.
2. Seal the hose to the swivel tube.
3. Refit the hose bumper.
4. Pull on the hose to disengage the latch pawl and slowly allow the hose to retract.

TECHNICAL DATA

REEL MODEL	MAX PRESSURE	INLET/ OUTLET	HOSE I.D.	HOSE LENGTH
HROG15.6C	276 BAR	1/4"	1/4"	15m
HROAW15.12C	20 BAR	3/8"	3/8"	15m
HRO15.12C	138 BAR	1/2"	1/2"	15m
HRO15.12F	138 BAR	1/2"	1/2"	15m

DIMENSIONS



E.C. DECLARATION OF CONFORMITY

HYTEK
FUEL & LUBRICATION
EQUIPMENT

Date of Issue: 9th July 2010

Equipment Details: Hytek's Range Of Retractable Hose Reels

Applicable standards: Machinery Directive 2006/42/EC

The Pressure Equipment Regulations
1999 S.I. 1999/2001

Entry Into Force:- 29 November 1999

Amended to S.I. 2002/1267

Pressure Equipment Directive 97/23/EC

Authorized By: Clive Wellings
Technical Manager Hytek

Declaration Number: EC086