

Bunded Oil Tanks

RELIABLE FUEL STORAGE

Harlequin[®]
StorageTanks
RELIABLE CONTAINERS



650 HQi / ITE / ITT

Length: 1,715mm
Width: 670mm
Height: 1,330mm
Capacity: 673 litres



1000 HQi / ITE / ITT

Length: 2,150mm
Width: 690mm
Height: 1,420mm
Capacity: 1,055 litres



1100 HQi / ITE / ITT

Length: 1,880mm
Width: 890mm
Height: 1,595mm
Capacity: 1,097 litres



1200 HQi / ITE / ITT

Length: 1,960mm
Width: 1,200mm
Height: 1,120mm
Capacity: 1,210 litres



1225 HQi / ITE / ITT

Length: 2,110mm
Width: 840mm
Height: 1,525mm
Capacity: 1,248 litres



1300 HQi / ITE / ITT

Length: 2,100mm
Width: 950mm
Height: 1,540mm
Capacity: 1,344 litres



1400 HQi / ITE / ITT

Length: 1,900mm
Width: 1,250mm
Height: 1,420mm
Capacity: 1,452 litres



1450 HQi / ITE / ITT

Diameter: 1,560mm
Height: 1,590mm
Capacity: 1,498 litres



2000 HQi / ITE / ITT

Length: 2,360mm
Width: 1,315mm
Height: 1,415mm
Capacity: 2,092 litres



2500 HQi / ITE / ITT

Length: 2,460mm
Width: 1,435mm
Height: 1,470mm
Capacity: 2,571 litres



3500 ITE / ITT

Length: 2,450mm
Width: 1,770mm
Height: 1,890mm
Capacity: 3,471 litres



5400 ITE / ITT

Diameter: 2,575mm
Height: 2,100mm
Capacity: 5,307 litres



7500 ITE / ITT

Length: 2,940mm
Width: 2,305mm
Height: 2,820mm
Capacity: 8,088 litres



9250 ITE / ITT

Length: 3,140mm
Width: 2,510mm
Height: 2,820mm
Capacity: 9,382 litres

3 DIFFERENT MODELS

HQi

Bunded Oil Tank only.

ITT

Bunded Oil Tank with a Tank Pack, including a top outlet fitting kit and an Apollo electronic gauge.



ITE (Most Popular)

Bunded Oil Tank with a Tank Pack, including a bottom outlet fitting kit and an Apollo electronic gauge.



10 Year Conditional Registered Warranty*



Compatible Tanks



Tank Life Expectancy

*Warranty: 10 year conditional warranty only when product is registered on our website.

TANK BASE SIZES

TANK MODEL	CEMENT BASE LENGTH	CEMENT BASE WIDTH
650 HQi / ITE / ITT	2315mm	1270mm
1000 HQi / ITE / ITT	2750mm	1290mm
1100 HQi / ITE / ITT	2480mm	1490mm
1200 HQi / ITE / ITT	2560mm	1800mm
1225 HQi / ITE / ITT	2710mm	1440mm
1300 HQi / ITE / ITT	2700mm	1550mm
1400 HQi / ITE / ITT	2500mm	1850mm
1450 HQi / ITE / ITT	2160mm	2160mm
2000 HQi / ITE / ITT	2960mm	1915mm
2500 HQi / ITE / ITT	3060mm	2035mm
3500 ITE / ITT	3050mm	2370mm
5400 ITE / ITT	3175mm	3175mm
7250 ITE / ITT	3540mm	2905mm
9250 ITE / ITT	3740mm	3110mm
1000 SSL	2500mm	1240mm
1400 SSL	2710mm	1240mm
1650 HZB	2610mm	1950mm

Diamond Oil Tanks



1000SSL

Length: 1,900mm
Width: 640mm
Height: 1,465mm
Capacity: 999 litres



1400SSL

Length: 2,110mm
Width: 640mm
Height: 1,670mm
Capacity: 1,435 litres



1650HZB

Length: 2,010mm
Width: 1,350mm
Height: 1,430mm
Capacity: 1,662 litres

KEY FEATURES

(Bunded Oil Tanks & Diamond Oil Tanks)

- Integrally Bunded
- HVO Compatible
- Made from durable Medium Density Polyethylene material
- Industry leading heavy duty lid design
- CE Certified Diamond Oil Tanks
- CE / OFCERT licensed Bunded Oil Tanks

Underground Oil Tanks



UGD1400

Length: 2,105mm
Width: 1,255mm
Height: 2,100mm
Capacity: 1,465 litres



UGD2500

Length: 2,450mm
Width: 1,440mm
Height: 2,300mm
Capacity: 2,655 litres

Harlequin Manufacturing Ltd

Northern Ireland
21, Clarendon Road
Moir, Northern Ireland
BT67 0PB

England
Unit 1, Lancaster Business Park
East Kirkby
PE23 4BH

028 9261 1077 | info@harlequin-mfg.com | www.harlequinplastics.co.uk



Please note: All tank capacities are brimful. All information contained herein is understood to be correct at time of publication. Harlequin reserve the right to amend product specification without notice.

Harlequin[®]
MANUFACTURING FOR TOMORROW

Diesel/Fuel Tanks

SAFE & SECURE Diesel Storage
Red - White Diesel

Harlequin[®]
StorageTanks
RELIABLE CONTAINERS



1300SLFP

Length: 2,300mm
Width: 950mm
Height: 1,850mm
Capacity: 1,344 litres



1400FP

Length: 1,610mm
Width: 1,570mm
Height: 1,880mm
Capacity: 1,498 litres



2500SLFP

Length: 2,550mm
Width: 1,385mm
Height: 1,985mm
Capacity: 2,530 litres



2500FP

Length: 2,060mm
Width: 2,020mm
Height: 1,880mm
Capacity: 2,571 litres



3500FP

Length: 2,200mm
Width: 2,200mm
Height: 2,060mm
Capacity: 3,553 litres



5000FP AGRI

Length: 2,360mm
Width: 2,360mm
Height: 2,210mm
Capacity: 5,314 litres



1300SLFS

Length: 2,300mm
Width: 950mm
Height: 1,850mm
Capacity: 1,344 litres



1400FS

Length: 1,610mm
Width: 1,570mm
Height: 1,880mm
Capacity: 1,498 litres



2500SLFS

Length: 2,550mm
Width: 1,385mm
Height: 1,985mm
Capacity: 2,530 litres



2500FS

Length: 2,060mm
Width: 2,020mm
Height: 1,880mm
Capacity: 2,571 litres



3500FS

Length: 2,200mm
Width: 2,200mm
Height: 2,060mm
Capacity: 3,553 litres



5000FS

Length: 2,720mm
Width: 2,220mm
Height: 2,360mm
Capacity: 5,307 litres



7500FS

Length: 2,940mm
Width: 2,305mm
Height: 2,820mm
Capacity: 8,088 litres



9250FS

Length: 3,40mm
Width: 2,510mm
Height: 2,820mm
Capacity: 9,382 litres



Compatible Tanks

Portable Diesel / AdBlue[®] Tanks

SAFE & EASY storage and dispensing
of Diesel / AdBlue[®] on site



220 Litres Diesel

Width: 800mm
Depth: 600mm
Height: 645mm
Capacity: 220 litres



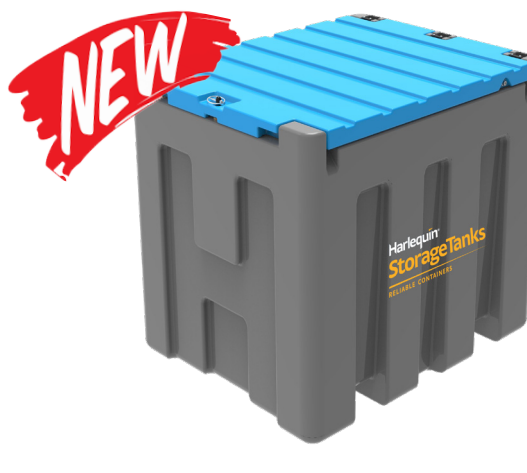
440 Litres Diesel

Length: 1000mm
Width: 800mm
Height: 790mm
Capacity: 440 litres



220 Litres AdBlue[®]

Width: 800mm
Depth: 600mm
Height: 645mm
Capacity: 220 litres



440 Litres AdBlue[®]

Length: 1000mm
Width: 800mm
Height: 790mm
Capacity: 440 litres



430L Transfuel Bunded

Length: 1,010mm
Width: 1,260mm
Height: 1,090mm
Capacity: 426 litres

AdBlue[®] Stations

Waste Oil Tanks



1400 Blue Station

Length: 1,610mm
Width: 1,570mm
Height: 1,880mm
Capacity: 1498 litres



2500 SL Blue Station

Length: 2,550mm
Width: 1,385mm
Height: 1,985mm
Capacity: 2,530 litres



More Sizes Available

2500SLBS, 3500BS
5000BS, 9250BS



ORB350

Length: 980mm
Width: 980mm
Height: 1,300mm
Capacity: 358 litres



ORB650

Length: 1,715mm
Width: 670mm
Height: 1,435mm
Capacity: 673 litres



More Sizes Available

1000ORB, 1200ORB
1400ORB, 2000ORB
2500ORB

Harlequin Manufacturing Ltd

Northern Ireland
21, Clarehill Road
Moir, Northern Ireland
BT67 0PB

England
Unit 1, Lancaster Business Park
East Kirkby
PE23 4BH

028 9261 1077 | info@harlequin-mfg.com | www.harlequinplastics.co.uk



Please note: All tank capacities are brimful. All information contained herein is understood to be correct at time of publication. Harlequin reserve the right to amend product specification without notice.