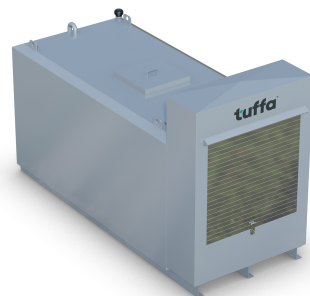
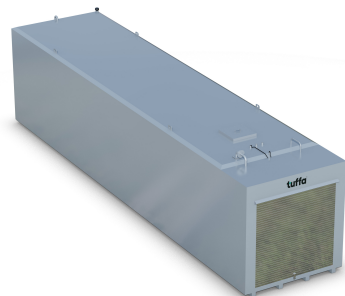


Steel Units

- Range from 5000 – 100,000 litres
- Fully bunded to 110% of the inner tank volume
- Manufactured generally to BSEN799 part 5, Type J. Steel plate: BSEN 10025:2004:S275.
- 1 metre Full end cabinet, roller shutter door – (20k plus)



tuffa[®]

DESIGN FUNCTION PERFORMANCE







Enquire online
for discounts
on trade
prices.

tuffa[®]

DESIGN FUNCTION PERFORMANCE

+44(0)1889 567 700

sales@tuffa.co.uk / www.tuffa.co.uk

   tuffatanks  tuffa-uk-ltd

Steel Diesel Tanks

+44(0)1889 567 700

www.tuffa.co.uk

Why Tuffa?

tuffa
DESIGN FUNCTION PERFORMANCE

A proud and trusted British manufacturer with over 30 years of industry experience offering one of the UK's most comprehensive range of storage and distribution tanks.

We design and manufacture purpose-built tanks for all your storage needs.

With Tuffa, you will also benefit from:

- Strict adherence to quality management with accreditations, including ISO9001 and BS EN1090
- Service and aftersales care direct from the manufacturer
- Minimum 20-year design life and 10-year warranty on all bunded tanks
- Only premium materials and tier-one equipment used
- Fuel tanks compatible with diesel, gas oil, kerosene, and future fuels such as HVO
- Discounts on trade prices available

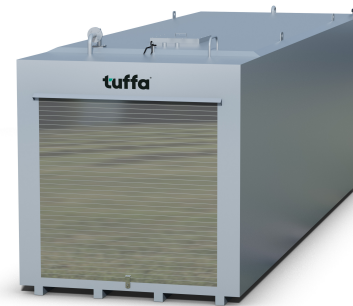
Steel diesel tanks

Our steel tanks can accommodate capacities of up to 100,000 litres and provide solid, hardwearing, and customisable fuel dispensing. To guarantee longevity, our steel tanks are bunded, including the tank's base, and fabricated with thick mild steel and reinforced steel bracing.

5,000-litre and 10,000-litre models feature a sizeable lockable cabinet with roller-shutter doors. Upwards from 20,000 litres, the cabinet includes a high-end walk-in design.

Key features include:

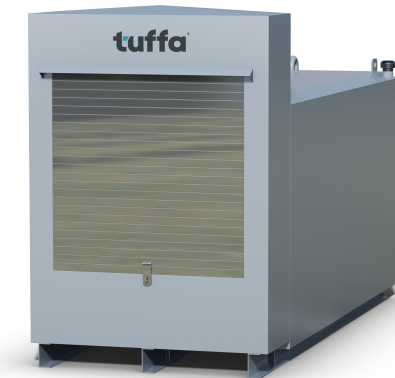
- 230V Piusi pump
- 6m hose / C2020 contents gauge (calibrated) with bund alarm as standard
- pulse meter
- 10-micron water & particulate filter



Storage-only tanks are available for uses including electricity generation, grain drying and external dispensing equipment.

Options:

- High flow pumping kits
- Hose reel- (10 metre retractable)
- Fuel management systems, (with in built GRPS). Bare tank- (1.5" top suction line terminating at low level. This replaces the dispensing kit, maybe to use with remote dispensers).



Why choose Tuffa Steel Diesel Tank?

- 20-year design life when correctly installed and maintained and a 10-year warranty when registered
- Internal bund for accidental spills and overfills
- Requires a simple, flat, concrete base and final electrical connection (if applicable)
- Used with full dispensing kits or suction to remote dispensers and towards feed generators
- Forecourt-style dispensing and convenience
- Fitted with premium ancillary equipment
- Bunded in accordance with Oil Storage Regulations
- Made from mild steel, which is very strong and durable
- Greater versatility with a range of optional extras available to customise the tank for your site requirements
- Lockable cabinet prevents theft
- Compatible with HVO fuel and HVO Diesel blends

+44(0)1889 567 700