

## Plastic Units

- Range from 3500 – 30,000 litres
- Designed and manufactured to EN 13575 (models 3500 – 1000).
- These units are rotomoulded in UV-stabilised, seamless, corrosion-resistant polymer
- Fully bunged to 110% of the inner tank volume



## Tank tech

Like your tank high-tech? We fit and supply a range of tier-one ancillary equipment with our tanks. Depending on the model, this can include a fuel management system, pulse meter, hose reel, high-flow pump and a 12V/24V pump.



Enquire online  
for discounts  
on trade  
prices.



# tuffa®

DESIGN FUNCTION PERFORMANCE



## Plastic Diesel Tanks

+44(0)1889 567 700

[www.tuffa.co.uk](http://www.tuffa.co.uk)

# tuffa®

DESIGN FUNCTION PERFORMANCE

+44(0)1889 567 700

[sales@tuffa.co.uk](mailto:sales@tuffa.co.uk) / [www.tuffa.co.uk](http://www.tuffa.co.uk)

[f](#) [t](#) [v](#) [tuffatanks](#) [in](#) [tuffa-uk-ltd](#)

# Why Tuffa?



A proud and trusted British manufacturer with over 30 years of industry experience offering one of the UK's most comprehensive range of storage and distribution tanks.

We design and manufacture purpose-built tanks for all your storage needs. With Tuffa, you will also benefit from:

- Strict adherence to quality management with accreditations, including ISO9001 and BS EN1090
- Service and aftersales care direct from the manufacturer
- Minimum 20-year design life and 10-year warranty on all bunded tanks
- Only premium materials and tier-one equipment used
- Fuel tanks compatible with diesel, gas oil, kerosene, and future fuels such as HVO
- Discounts on trade prices available

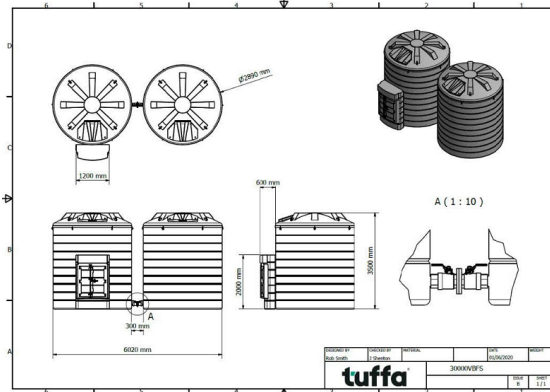
## Plastic diesel tanks

Our plastic tanks are rotomoulded with a UV-stabilised, corrosion-resistant polymer that prevents deformation and makes a durable unit without joints or seams.

The integral bund meets environmental standards, whilst a flip lid or large lockable cabinet secures high-spec, tier-one ancillary equipment. Designed to be low-maintenance, the system includes a Pusi pump and a 10-micron water and particulate filter that prevents fuel contamination.

### Key features include:

- 230V Pusi pump
- 6m hose
- float gauge or FMS gauge & alarm
- flowmeter
- 10-micron water & particulate filter



Capacities of up to 30,000 litres with interlinking

+44(0)1889 567 700

## Options:

The fuel dispensers can be fitted with;

- An additional bottom outlet – this can be used as a feed; instead of purchasing an additional tank as a feed. (Example: a fuel dispensing tank c/w a 1" b/o to feed a grain dryer, or to feed a generator.)
- High flow pumping units
- 10 metre hose reel
- Fuel Management, with inbuild GRPS and the option to link to remote level monitoring.



## Why choose Tuffa Plastic Diesel Tank?

- Bunded in accordance with Oil Storage Regulations-reducing the chance of spills and overfills to protect the environment and comply with regulations throughout the UK.
- These large units have a lockable cabinet housing the tier-one ancillary equipment.
- 20-year design life when correctly installed and maintained and a 10-year warranty when registered
- The tanks are compatible with white or red diesel and HVO100 or HVO diesel blends.
- They are available as full dispensers, with pumping kits, or as bare tanks, with suction, (towards remote dispensers), or towards generators or site with existing pumping equipment.
- As standard our units have a calibrated contents gauge with a bund/overflow device, as standard.
- Our 15,000 litres unit is unique to Tuffa UK – being the largest rotomoulded bunded tank on the market.
- The 30,000 litres unit is unique! The model comprises of 2 x 15,000 litres interlinked to attain a capacity of 30,000 litres. This is far more competitive than that of a bulk steel tank!