

Kingspan Access Panel

New commercial
panel to monitor
fuel dispensing



Key Benefits:

- Registration of fuel quantity delivered to each user/vehicle
- Built-in database for up to 1500 users/vehicles
- Identification with unique RFID swipe cards
- Real time user database update with GPRS, tank can be situated in any location
- Two-level authentication
- Location control via built-in GPS
- Fuel theft, leakage, drop and replacement detection
- Reports

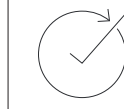
Modernise your tank management

The Kingspan Access system supports comprehensive fuel management activities by monitoring company fuel stations or tanks distributing fuel. The use of proprietary flow meters allows you to install the system on any tank or station used for fuel distribution.

Kingspan Access Panel

New commercial panel to monitor fuel dispensing

Easy to Install



Intelligent Tank Monitoring



Unique Design



Kingspan Access is a comprehensive fleet management system, that includes:

- Kingspan Access GPS monitoring system
- Manage supplies to fuel tanks and stations
- Use of OptiTrax to determine and optimize routes
- Road cards and drivers log

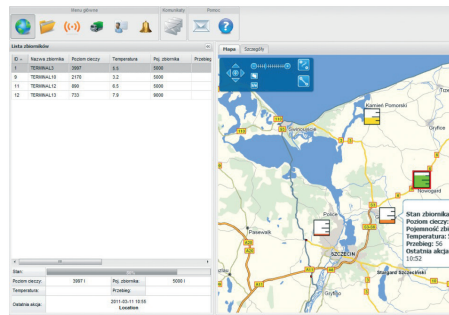
Verification that all distributed fuel was delivered into the tank/vehicle/machine.

Kingspan Access GPS also allows you to detect any drop in fuel levels providing comprehensive control of fuel management activities, from the filling station to the usage of fuel by a vehicle or machine.

Software

The system administrator can modify parameters and access rights for individual employees by specifying days and times of week in which they can collect fuel, daily refueling limits and other parameters. The system allows you to efficiently manage multiple tanks, visualising on the map the filling level of each tank, in order to refill, when needed. Full integration with the Kingspan Access GPS monitoring system allows you to capture all events related to the operation of both vehicles and machines. Route planning and optimisation makes it the most comprehensive solution for companies active in transportation,

agriculture, construction, municipal services or distribution.



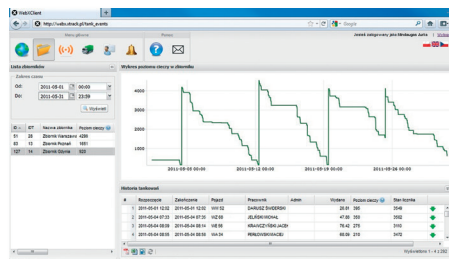
Key Features:

- User identification via unique RFID card which can be used by a number of other systems to identify drivers of vehicles equipped with Kingspan Access
- Two-step refueling authentication (eg, manager / driver, vehicle / driver, contractor / employee, etc.)
- Complete real time user database stored in the memory of the device allows you to remotely lock/activate cards instantly
- Remote management even on mobile stations or tanks
- Control the fuel pump, only after authorization is it possible to start the pump and begin fuel distribution
- Fuel theft, leakage, drop and replacement detection

Data Analysis

Kingspan Access improves fuel economy management through:

- Notifications via SMS, e-mail, e.g. when the liquid level in the tanks drops below certain value
- Data generation showing changes of fuel level in the tank at given time
- Report generation
- RFID swipe cards assigned to vehicles and employees



Report on status, ref. 2011-05-01, for 2011-05-01									
Report date	Ref. date	Ref. time	Ref. location	Ref. status	Ref. type	Ref. value	Ref. unit	Ref. description	Ref. comment
2011-05-01	2011-05-01	12:00:00	21.70	0.2	500	0.00	liters	TANK1-L1	
2011-05-01	2011-05-01	12:00:00	8.0	0.5	500	0.00	liters	TANK1-L2	
2011-05-01	2011-05-01	12:00:00	7.0	0.8	500	0.00	liters	TANK1-L3	
2011-05-01	2011-05-01	12:00:00	21.70	0.2	500	0.00	liters	TANK1-L1	
2011-05-01	2011-05-01	12:00:00	8.0	0.5	500	0.00	liters	TANK1-L2	
2011-05-01	2011-05-01	12:00:00	7.0	0.8	500	0.00	liters	TANK1-L3	
2011-05-01	2011-05-01	12:00:00	21.70	0.2	500	0.00	liters	TANK1-L1	
2011-05-01	2011-05-01	12:00:00	8.0	0.5	500	0.00	liters	TANK1-L2	
2011-05-01	2011-05-01	12:00:00	7.0	0.8	500	0.00	liters	TANK1-L3	

For more information on any of our products:
 Tel: +44 (0) 28 3836 4415 Email: sensor@kingspan.com
 or visit us at: www.kingspansensor.com