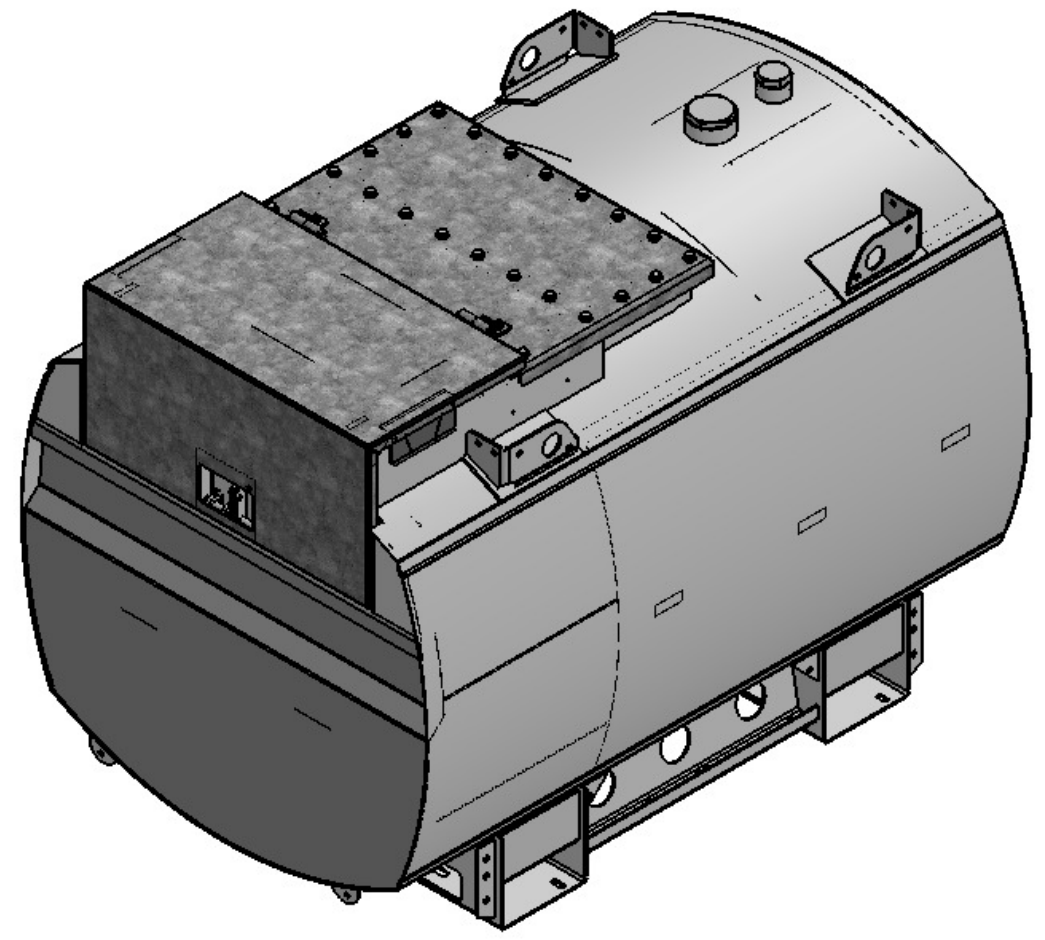


This drawing and the information it contains is the property of Western Global Australia Pty Limited., and must be returned upon request. It must not be copied directly, nor indirectly, placed in the hands of others, nor used in any way that is detrimental to the interests of Western Global Australia Pty Limited. © COPYRIGHT

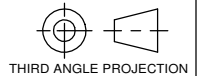
Standards For Safety : Close Top Diked (Contained)

1. UL 142 : Steel Above Ground Tanks for Flamable and Combustible Liquids
2. CAN/ULC-S601 : Shop Fabricated Steel Above Ground Tanks for Flamable and combustibile Liquids
3. ADR
4. AS 1692
5. AS 1940

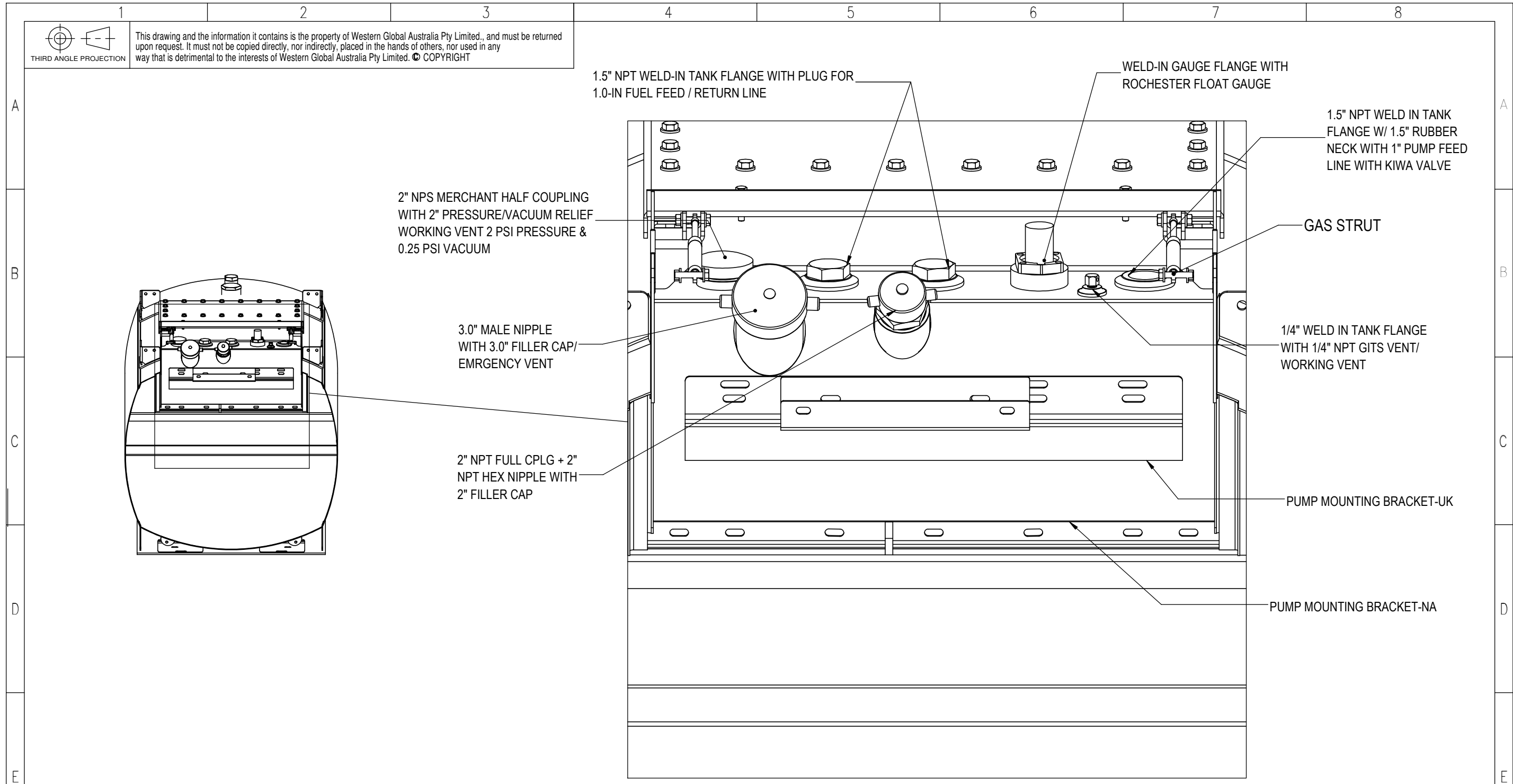


Liquid Volume	Litre	US Gal	UK Gal
Optimum Tank Capacity	1037	274	228
Safe Fill Capacity @95%	985	260	217
Bund (Dike) Brim Full	1220	322	268
	Kg	Lb	
Weight Empty	450	992	
Weight Filled	1487	3278	

REV	REVISION DESCRIPTION	DATE	BY	CHECK	APP'D	GENERAL TOLERANCE	WESTERN GLOBAL		PROJECT ID	PROJECT
						0.00 ±0.005 0.0 ±0.05 0 ±0.5 OVER 100 TO 500 ±1 OVER 500 TO 5000 ±2 OVER 5000 TO 10000 ±5 ANGLES ±0.5°				
4						SURFACE FINISH FABRICATION 6.3 MACHINING 3.2			TITLE ABBI 10ART ASSEMBLY	
3						MATERIAL : WEIGHT (KG) SEE PARTS 449.45	THICKNESS(mm):		SHEET No 1/4	DRAWING No. WG-SD-ABBI-A001-10ART-GA
2	REAR CHANNEL IN BASE FRAME UPDATED TO ACCOMODATE THE UK TRAILER MOUNT	30-AN-17	MN	AK	MG		101-251 SAULTEAUX CRESCENT, WINNIPEG MB, R3J 3C7 CANADA, PH:+1 (204) 772 6525		SCALE 1:10	PAPER A3
1	ISSUED FOR INFORMATION	24-JAN-17	MN	AK	MG				REV 2	



This drawing and the information it contains is the property of Western Global Australia Pty Limited., and must be returned upon request. It must not be copied directly, nor indirectly, placed in the hands of others, nor used in any way that is detrimental to the interests of Western Global Australia Pty Limited. © COPYRIGHT



1.5" NPT WELD-IN TANK FLANGE WITH PLUG FOR 1.0-IN FUEL FEED / RETURN LINE

WELD-IN GAUGE FLANGE WITH ROCHESTER FLOAT GAUGE

1.5" NPT WELD IN TANK FLANGE W/ 1.5" RUBBER NECK WITH 1" PUMP FEED LINE WITH KIWA VALVE

2" NPS MERCHANT HALF COUPLING WITH 2" PRESSURE/VACUUM RELIEF WORKING VENT 2 PSI PRESSURE & 0.25 PSI VACUUM

3.0" MALE NIPPLE WITH 3.0" FILLER CAP/ EMRGENCY VENT

2" NPT FULL CPLG + 2" NPT HEX NIPPLE WITH 2" FILLER CAP

GAS STRUT

1/4" WELD IN TANK FLANGE WITH 1/4" NPT GITS VENT/ WORKING VENT

PUMP MOUNTING BRACKET-UK

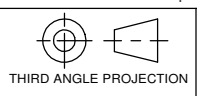
PUMP MOUNTING BRACKET-NA

DETAIL A

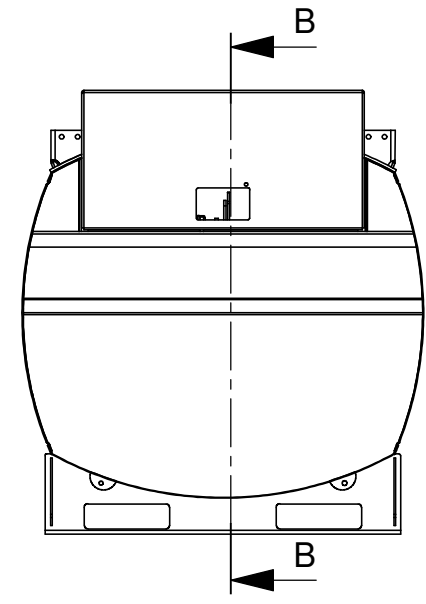
REV	REVISION DESCRIPTION	DATE	BY	CHECK	APP'D	GENERAL TOLERANCE	PROJECT ID		PROJECT	
						0.00 ±0.005				
						0.0 ±0.05				
						0 ±0.5				
						OVER 100 TO 500 ±1				
						OVER 500 TO 5000 ±2				
						OVER 5000 TO 10000 ±5				
						ANGLES ±0.5°				
						SURFACE FINISH				
						FABRICATION 6.3				
						MACHINING 3.2				
4						FABRICATION				
3						MACHINING				
2	REAR CHANNEL IN BASE FRAME UPDATED TO ACCOMMODATE THE UK TRAILER MOUNT	30-AN-17	MN	AK	MG	MATERIAL : SEE PARTS	WEIGHT (KG) 449.45	THICKNESS(mm):		TITLE
1	ISSUED FOR INFORMATION	24-JAN-17	MN	AK	MG					ABBI 10ART ASSEMBLY
								SCALE 1:10	PAPER A3	SHEET No 3/4
								DRAWING No. WG-SD-ABBI-A001-10ART-GA		REV 2



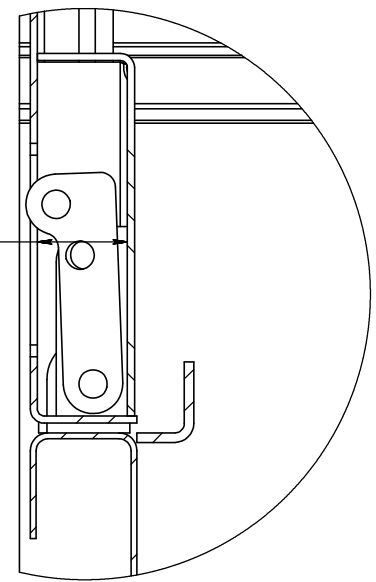
101-251 SAULTEAUX CRESCENT, WINNIPEG MB, R3J 3C7 CANADA, PH:+1 (204) 772 6525



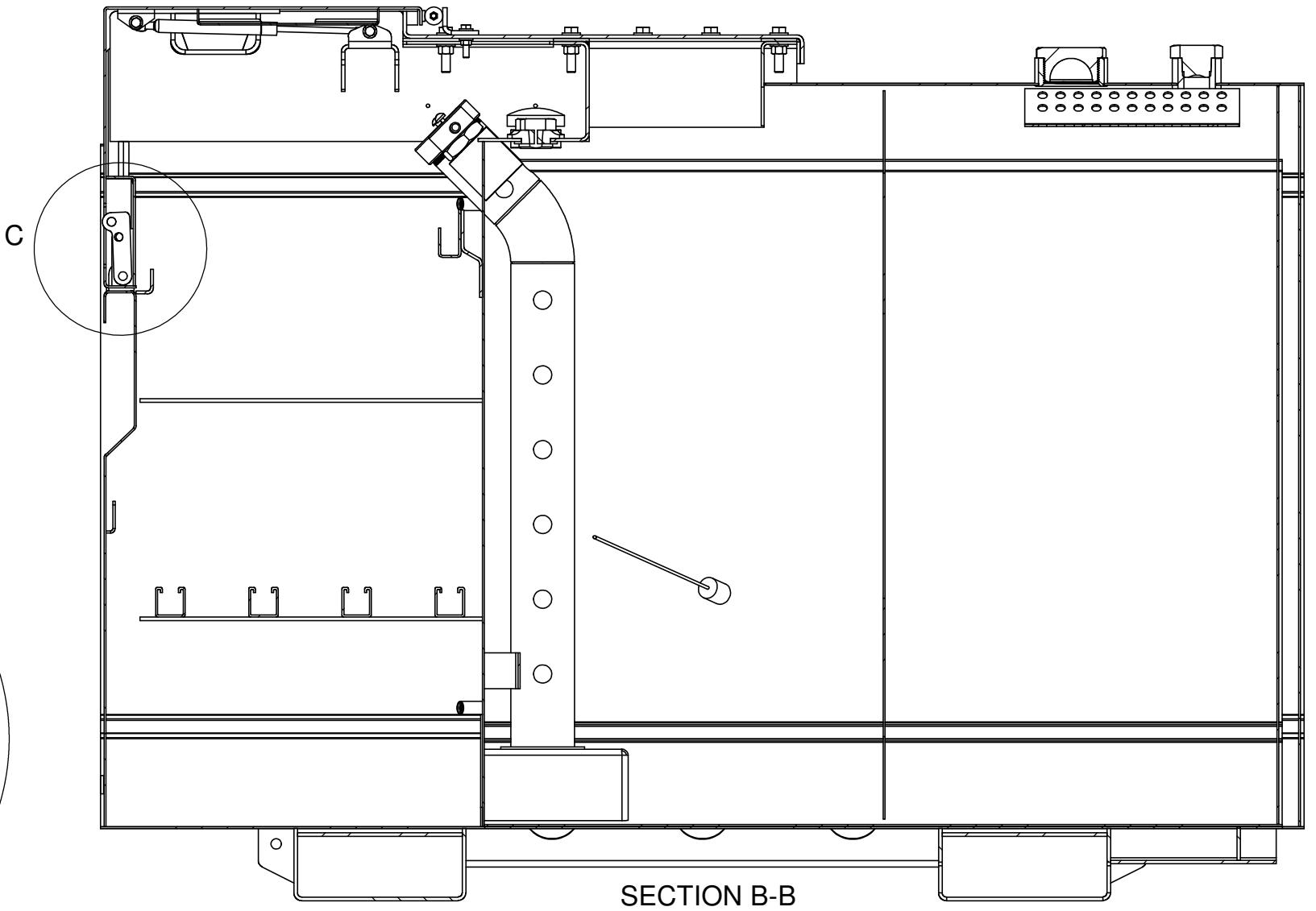
This drawing and the information it contains is the property of Western Global Australia Pty Limited., and must be returned upon request. It must not be copied directly, nor indirectly, placed in the hands of others, nor used in any way that is detrimental to the interests of Western Global Australia Pty Limited. © COPYRIGHT



1-1/2"
[38mm]



DETAIL C



SECTION B-B

REV	REVISION DESCRIPTION	DATE	BY	CHECK	APP'D	GENERAL TOLERANCE	WESTERN GLOBAL		PROJECT ID	PROJECT
						±0.005 ±0.0 ±0.5 ±1 ±2 ±5 ±0.5°				
						±0.005 ±0.0 ±0.5 ±1 ±2 ±5 ±0.5°			TITLE	
4						SURFACE FINISH FABRICATION 6.3 MACHINING 3.2	THICKNESS(mm):		ABBI 10ART ASSEMBLY	
3						MATERIAL : WEIGHT (KG)	SCALE PAPER		SHEET No	DRAWING No.
2	REAR CHANNEL IN BASE FRAME UPDATED TO ACCOMODATE THE UK TRAILER MOUNT	30-AN-17	MN	AK	MG	SEE PARTS 449.45	1:10 A3		4/4	WG-SD-ABBI-A001-10ART-GA
1	ISSUED FOR INFORMATION	24-JAN-17	MN	AK	MG		101-251 SAULTEAUX CRESCENT, WINNIPEG MB, R3J 3C7 CANADA, PH:+1 (204) 772 6525		REV	2