

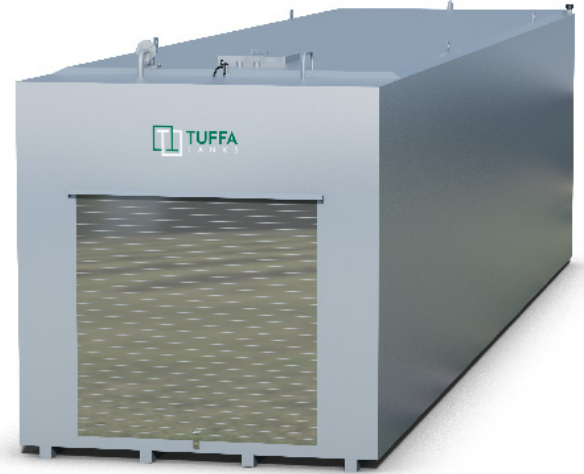
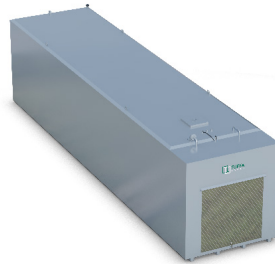
TECHNICAL SPECIFICATION



MODEL:	TUFFA 80000SBFS STEEL DIESEL TANK
CAPACITY (l):	80000
LENGTH (mm):	12000
WIDTH (mm):	3000
HEIGHT (mm):	3500
WEIGHT (kg):	15500
MATERIAL:	Mild steel
BUNDED:	

**NEED MORE
INFORMATION?**

CALL US ON:
01889 567700



SPECIFICATION

- ▶ 3" BSP fill connection with cap & chain
- ▶ Vent
- ▶ External pump (230V)
- ▶ High security cabinet with roller shutter door
- ▶ Contents reading gauge with bund alarm (230V)
- ▶ Pulsed output flowmeter
- ▶ 6m of delivery hose
- ▶ Automatic shut off nozzle
- ▶ Nozzle holster
- ▶ 10 micron water and particulate filter
- ▶ Overfill prevention valve
- ▶ 2x 2" spare sockets
- ▶ Channel runners
- ▶ 4x lifting eyes
- ▶ Primed and painted - RAL 7001 Grey

OPTIONAL EXTRAS

- ▶ Pump options - 12V, 24V and higher flow rate
- ▶ Hose reel - a self retracting hose reel with 10m of delivery hose
- ▶ Fuel management system - a fuel management system fitted within the lockable cabinet that allows authorised users to dispense fuel from the tank



Tuffa UK Limited
Dovefields Industrial Estate,
Derby Road, Uttoxeter
Staffs, ST14 8SW



... for all your liquid storage needs

Contact us on T: 01889 567700 | E: sales@tuffa.co.uk | W: www.tuffa.co.uk