

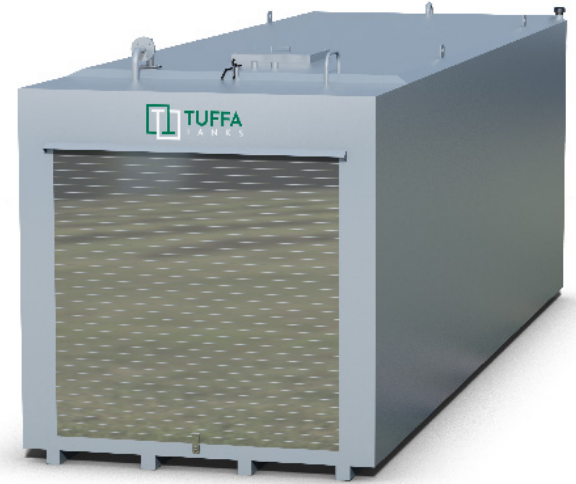
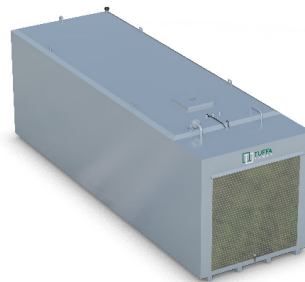
## TECHNICAL SPECIFICATION



<b>MODEL:</b>	<b>TUFFA 40000SBFS STEEL DIESEL TANK</b>
<b>CAPACITY (l):</b>	<b>40000</b>
<b>LENGTH (mm):</b>	<b>7000</b>
<b>WIDTH (mm):</b>	<b>3000</b>
<b>HEIGHT (mm):</b>	<b>3500</b>
<b>WEIGHT (kg):</b>	<b>9500</b>
<b>MATERIAL:</b>	<b>Mild steel</b>
<b>BUNDED:</b>	

**NEED MORE  
INFORMATION?**

CALL US ON:  
01889 567700



### SPECIFICATION

- ▶ 3" BSP fill connection with cap & chain
- ▶ Vent
- ▶ External pump (230V)
- ▶ High security cabinet with roller shutter door
- ▶ Contents reading gauge with bund alarm (230V)
- ▶ Pulsed output flowmeter
- ▶ 6m of delivery hose
- ▶ Automatic shut off nozzle
- ▶ Nozzle holster
- ▶ 10 micron water and particulate filter
- ▶ Overfill prevention valve
- ▶ 2x 2" spare sockets
- ▶ Channel runners
- ▶ 4x lifting eyes
- ▶ Primed and painted - RAL 7001 Grey

### OPTIONAL EXTRAS

- ▶ Pump options - 12V, 24V and higher flow rate
- ▶ Hose reel - a self retracting hose reel with 10m of delivery hose
- ▶ Fuel management system - a fuel management system fitted within the lockable cabinet that allows authorised users to dispense fuel from the tank



Tuffa UK Limited  
Dovefields Industrial Estate,  
Derby Road, Uttoxeter  
Staffs, ST14 8SW



**... for all your liquid storage needs**

**Contact us on T: 01889 567700 | E: sales@tuffa.co.uk | W: www.tuffa.co.uk**