


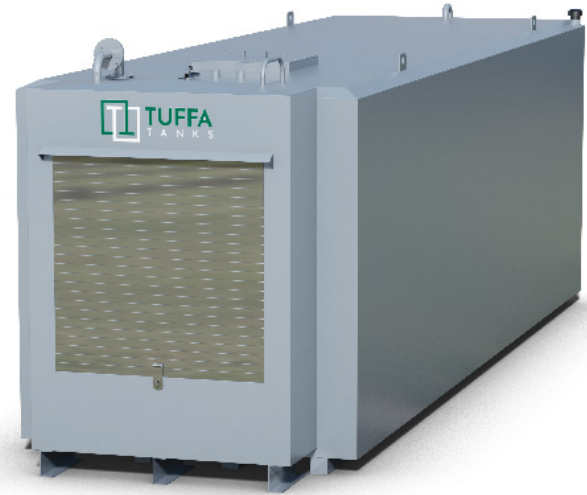
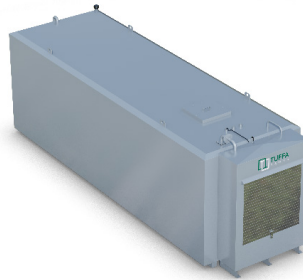
## TECHNICAL SPECIFICATION

<b>MODEL:</b>	<b>TUFFA 30000SBFS STEEL DIESEL TANK</b>
<b>CAPACITY (l):</b>	<b>30000</b>
<b>LENGTH (mm):</b>	<b>7000</b>
<b>WIDTH (mm):</b>	<b>2500</b>
<b>HEIGHT (mm):</b>	<b>3000</b>
<b>WEIGHT (kg):</b>	<b>9200</b>
<b>MATERIAL:</b>	<b>Mild steel</b>
<b>BUNDED:</b>	



### NEED MORE INFORMATION?

CALL US ON:  
01889 567700



### SPECIFICATION

- ▶ 2" BSP fill connection with cap & chain
- ▶ Vent
- ▶ External pump (230V)
- ▶ High security cabinet with roller shutter door
- ▶ Contents reading gauge with bund alarm (230V)
- ▶ Pulsed output flowmeter
- ▶ 6m of delivery hose
- ▶ Automatic shut off nozzle
- ▶ Nozzle holster
- ▶ 10 micron water and particulate filter
- ▶ Overfill prevention valve
- ▶ 2x 2" spare sockets
- ▶ Channel runners
- ▶ 4x lifting eyes
- ▶ Primed and painted - RAL 7001 Grey

### OPTIONAL EXTRAS

- ▶ Pump options - 12V, 24V and higher flow rate
- ▶ Hose reel - a self retracting hose reel with 10m of delivery hose
- ▶ Fuel management system - a fuel management system fitted within the lockable cabinet that allows authorised users to dispense fuel from the tank



Tuffa UK Limited  
Dovefields Industrial Estate,  
Derby Road, Uttoxeter  
Staffs, ST14 8SW



... for all your liquid storage needs

Contact us on T: 01889 567700 | E: sales@tuffa.co.uk | W: www.tuffa.co.uk